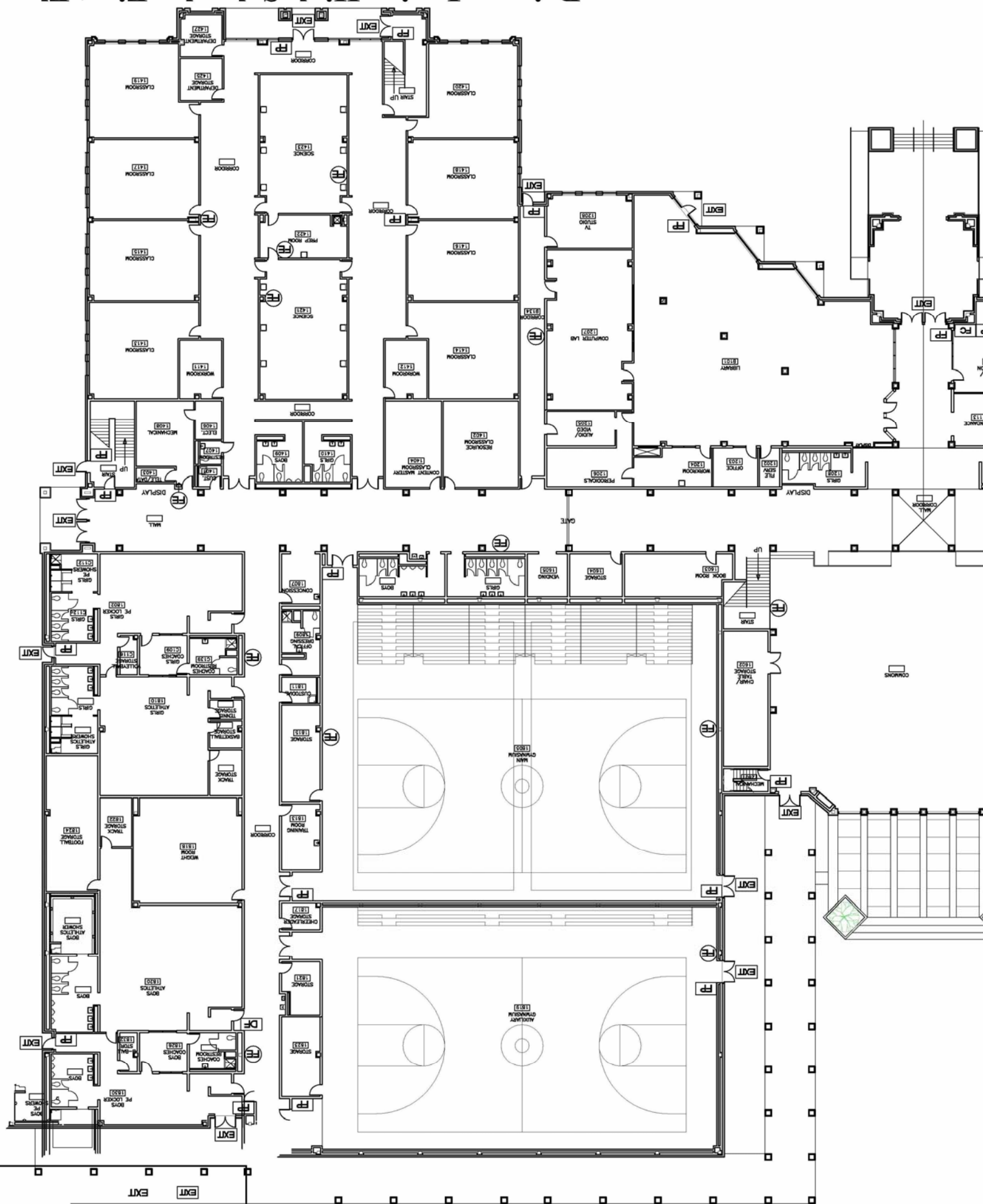
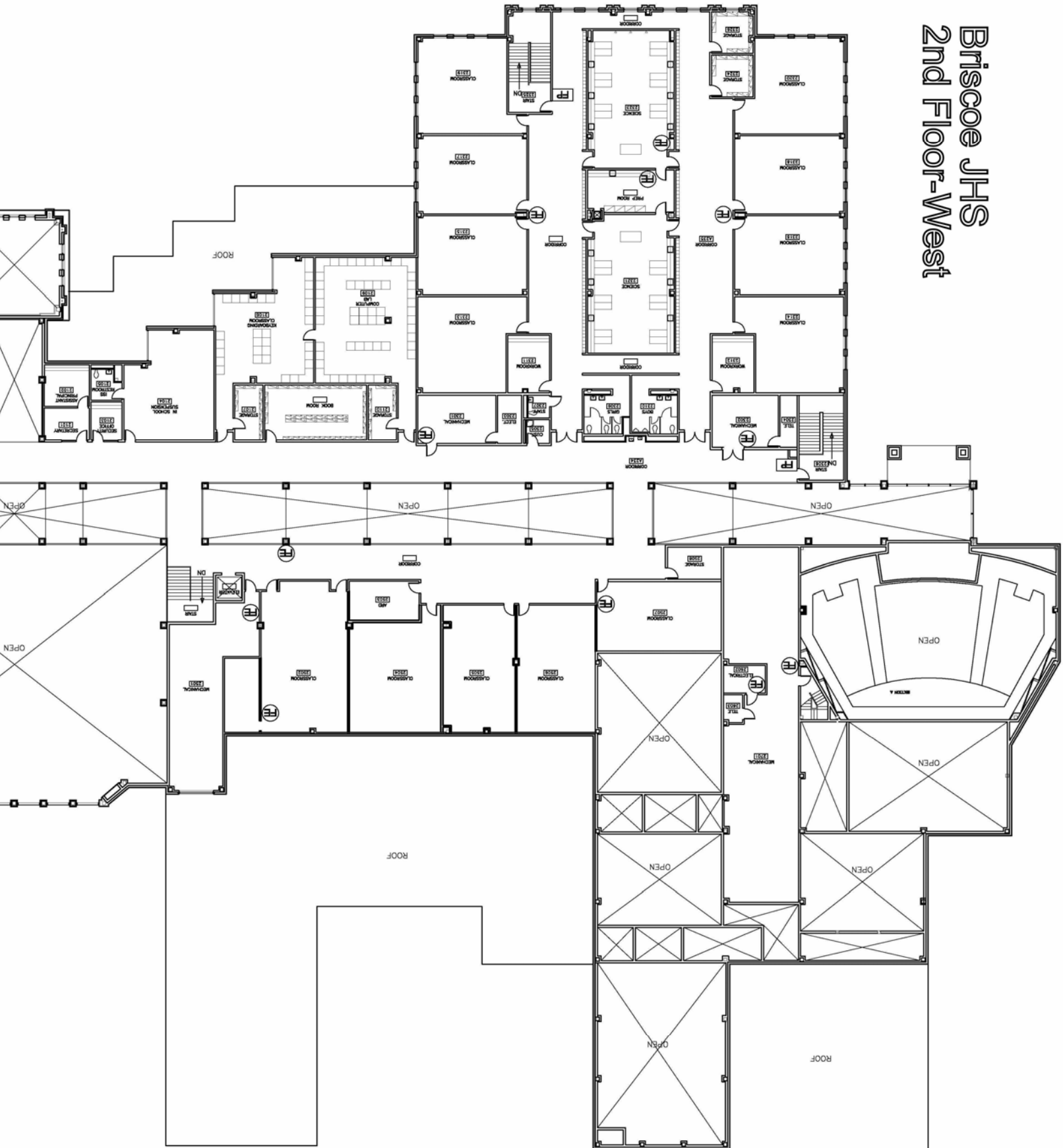


Briscoe Junior High School - First Floor

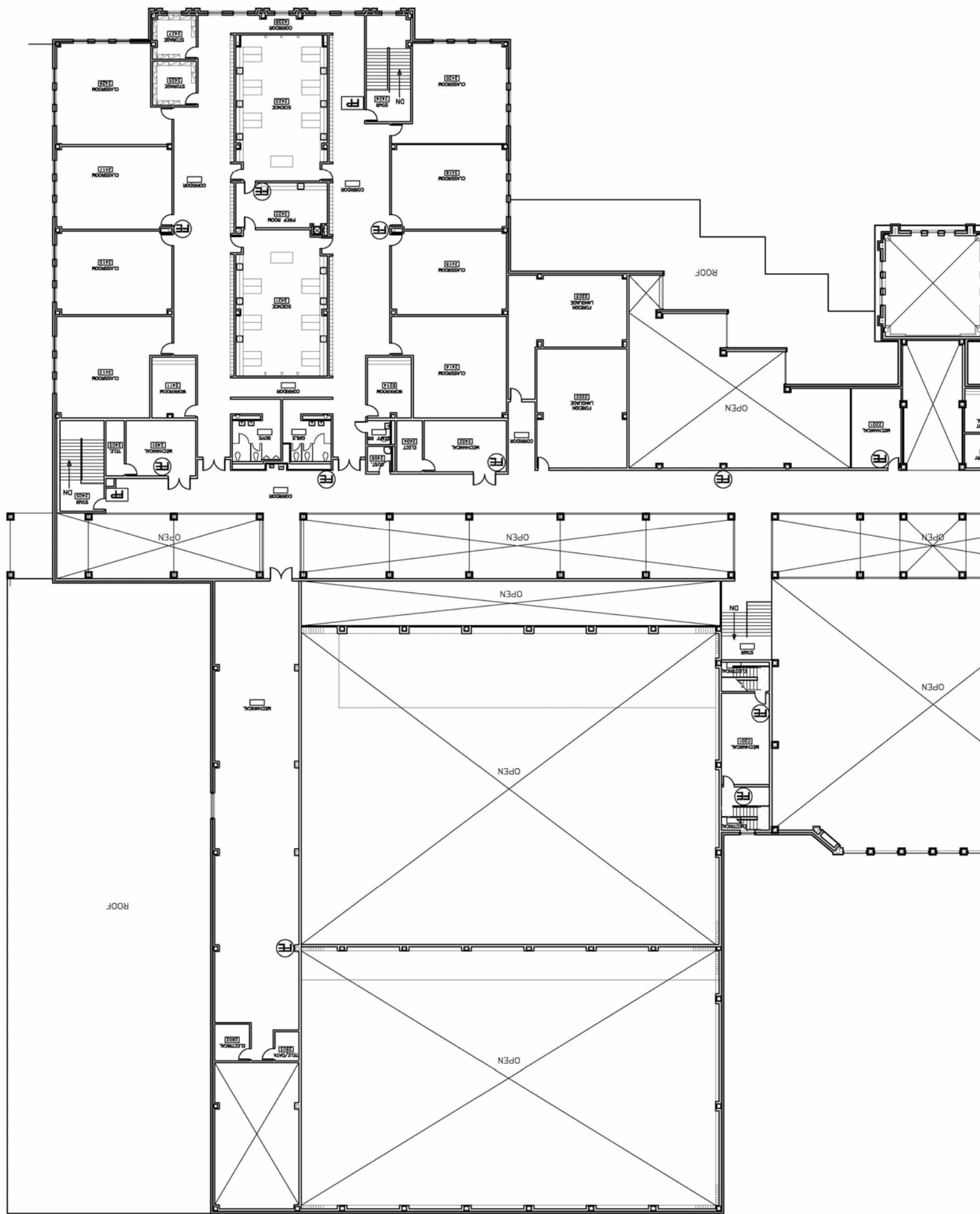


EXT	EXT
FH	FIRE HYDRANT
DF	DEFIBRILLATOR
AP	ANSUL PULL

Briscoe JHS 2nd Floor-West



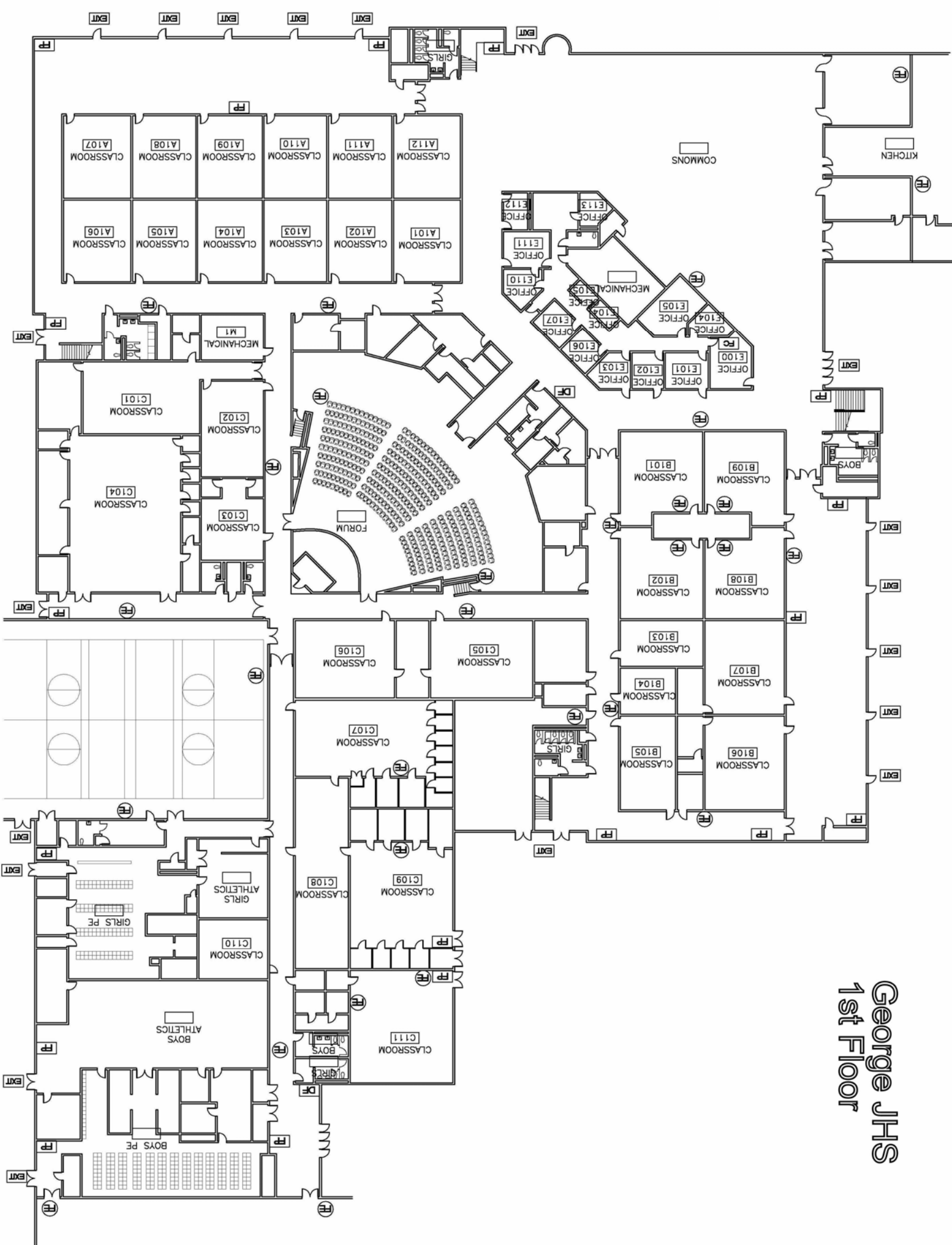
Briscoe Junior High School - Second Floor



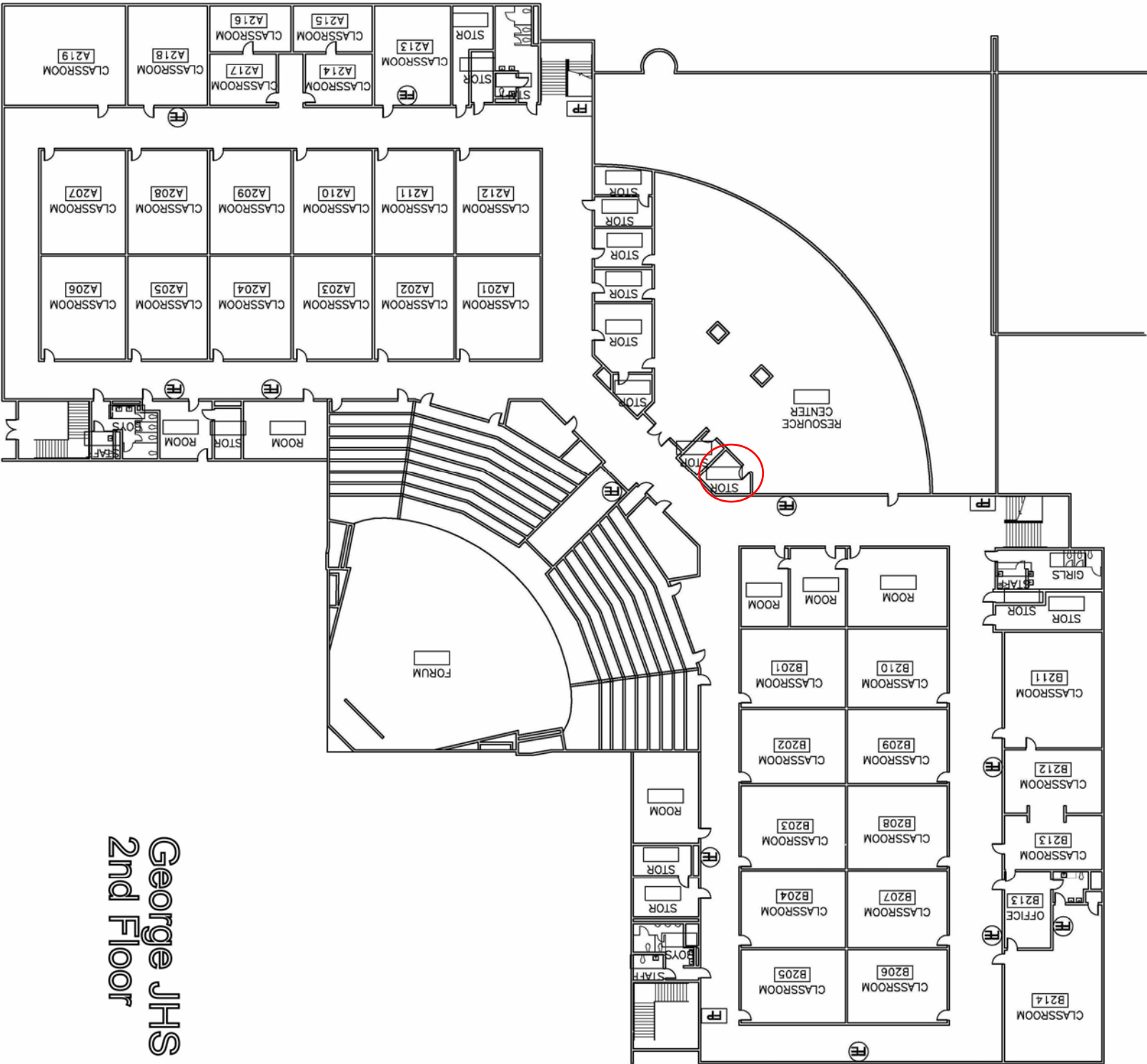
This is a detailed architectural floor plan of the first floor of a building. The plan is oriented with North at the top. It features a large auditorium on the right side, a central corridor system, and numerous smaller rooms labeled with numbers and names. The rooms include classrooms, offices, laboratories, storage areas, and a waiting area. Exits are marked with 'EXIT' signs and arrows. The plan also shows a large open area labeled 'PROSCENIUM' and a 'STAGE' area. The building has a complex layout with many interconnected rooms and corridors.

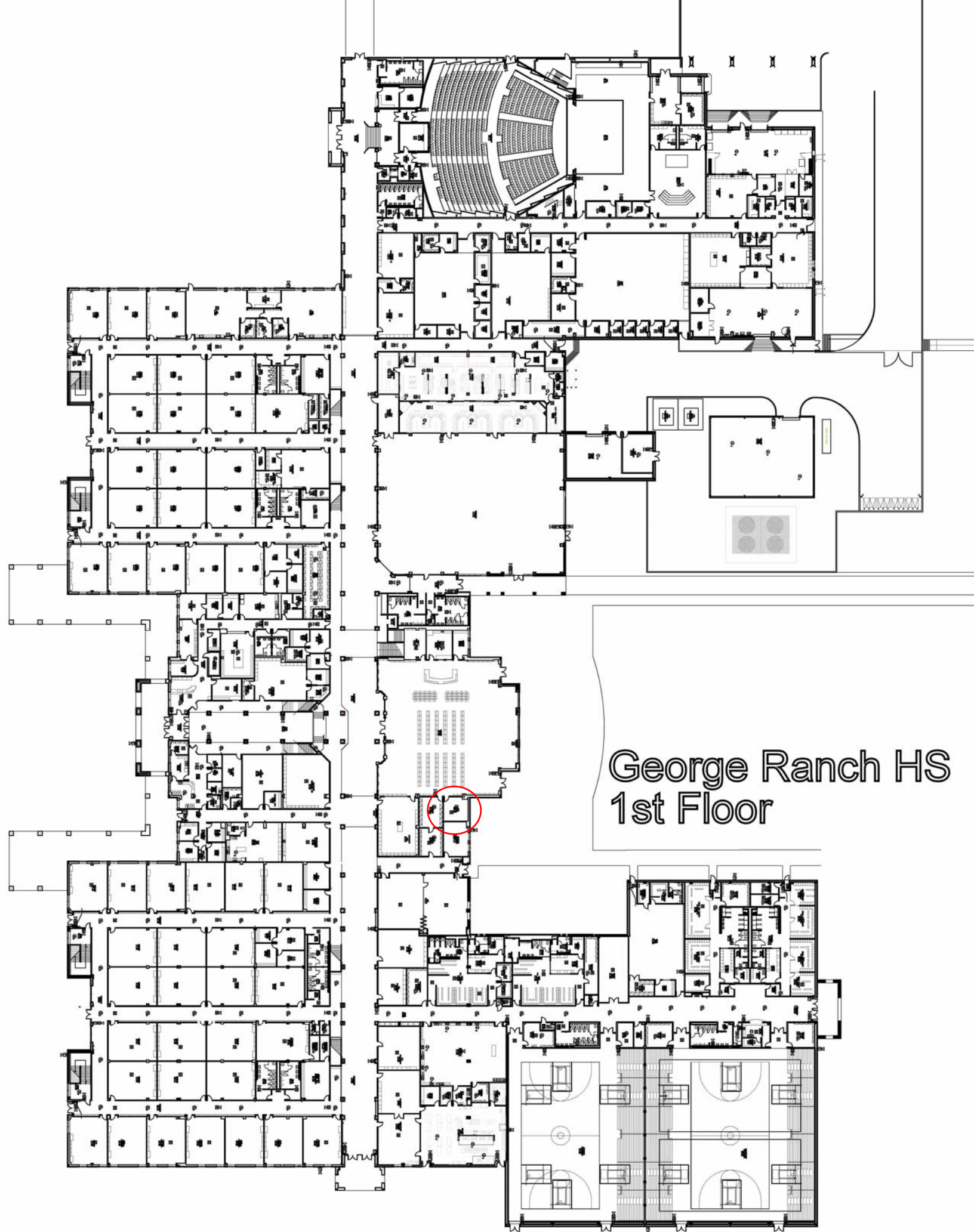
This architectural floor plan depicts the second floor of a school building. The layout includes a central corridor system connecting various rooms. On the left side, there are several classrooms labeled 'FUTURE CLASSROOM' (e.g., 2405, 2406, 2407, 2408, 2409, 2410, 2411, 2412, 2413, 2414, 2415, 2416, 2417, 2418, 2419, 2420, 2421, 2422, 2423, 2424, 2425, 2426, 2427, 2428, 2429, 2430, 2431, 2432, 2433, 2434, 2435, 2436, 2437, 2438, 2439, 2440, 2441, 2442, 2443, 2444, 2445, 2446, 2447, 2448, 2449, 2450, 2451, 2452, 2453, 2454, 2455, 2456, 2457, 2458, 2459, 2460, 2461, 2462, 2463, 2464, 2465, 2466, 2467, 2468, 2469, 2470, 2471, 2472, 2473, 2474, 2475, 2476, 2477, 2478, 2479, 2480, 2481, 2482, 2483, 2484, 2485, 2486, 2487, 2488, 2489, 2490, 2491, 2492, 2493, 2494, 2495, 2496, 2497, 2498, 2499, 2500, 2501, 2502, 2503, 2504, 2505, 2506, 2507, 2508, 2509, 2510, 2511, 2512, 2513, 2514, 2515, 2516, 2517, 2518, 2519, 2520, 2521, 2522, 2523, 2524, 2525, 2526, 2527, 2528, 2529, 2530, 2531, 2532, 2533, 2534, 2535, 2536, 2537, 2538, 2539, 2540, 2541, 2542, 2543, 2544, 2545, 2546, 2547, 2548, 2549, 2550, 2551, 2552, 2553, 2554, 2555, 2556, 2557, 2558, 2559, 2560, 2561, 2562, 2563, 2564, 2565, 2566, 2567, 2568, 2569, 2570, 2571, 2572, 2573, 2574, 2575, 2576, 2577, 2578, 2579, 2580, 2581, 2582, 2583, 2584, 2585, 2586, 2587, 2588, 2589, 2590, 2591, 2592, 2593, 2594, 2595, 2596, 2597, 2598, 2599, 2600, 2601, 2602, 2603, 2604, 2605, 2606, 2607, 2608, 2609, 2610, 2611, 2612, 2613, 2614, 2615, 2616, 2617, 2618, 2619, 2620, 2621, 2622, 2623, 2624, 2625, 2626, 2627, 2628, 2629, 2630, 2631, 2632, 2633, 2634, 2635, 2636, 2637, 2638, 2639, 2640, 2641, 2642, 2643, 2644, 2645, 2646, 2647, 2648, 2649, 2650, 2651, 2652, 2653, 2654, 2655, 2656, 2657, 2658, 2659, 2660, 2661, 2662, 2663, 2664, 2665, 2666, 2667, 2668, 2669, 2670, 2671, 2672, 2673, 2674, 2675, 2676, 2677, 2678, 2679, 2680, 2681, 2682, 2683, 2684, 2685, 2686, 2687, 2688, 2689, 2690, 2691, 2692, 2693, 2694, 2695, 2696, 2697, 2698, 2699, 2700, 2701, 2702, 2703, 2704, 2705, 2706, 2707, 2708, 2709, 2710, 2711, 2712, 2713, 2714, 2715, 2716, 2717, 2718, 2719, 2720, 2721, 2722, 2723, 2724, 2725, 2726, 2727, 2728, 2729, 2730, 2731, 2732, 2733, 2734, 2735, 2736, 2737, 2738, 2739, 2740, 2741, 2742, 2743, 2744, 2745, 2746, 2747, 2748, 2749, 2750, 2751, 2752, 2753, 2754, 2755, 2756, 2757, 2758, 2759, 2760, 2761, 2762, 2763, 2764, 2765, 2766, 2767, 2768, 2769, 2770, 2771, 2772, 2773, 2774, 2775, 2776, 2777, 2778, 2779, 2780, 2781, 2782, 2783, 2784, 2785, 2786, 2787, 2788, 2789, 2790, 2791, 2792, 2793, 2794, 2795, 2796, 2797, 2798, 2799, 2800, 2801, 2802, 2803, 2804, 2805, 2806, 2807, 2808, 2809, 2810, 2811, 2812, 2813, 2814, 2815, 2816, 2817, 2818, 2819, 2820, 2821, 2822, 2823, 2824, 2825, 2826, 2827, 2828, 2829, 2830, 2831, 2832, 2833, 2834, 2835, 2836, 2837, 2838, 2839, 2840, 2841, 2842, 2843, 2844, 2845, 2846, 2847, 2848, 2849, 2850, 2851, 2852, 2853, 2854, 2855, 2856, 2857, 2858, 2859, 2860, 2861, 2862, 2863, 2864, 2865, 2866, 2867, 2868, 2869, 2870, 2871, 2872, 2873, 2874, 2875, 2876, 2877, 2878, 2879, 2880, 2881, 2882, 2883, 2884, 2885, 2886, 2887, 2888, 2889, 2890, 2891, 2892, 2893, 2894, 2895, 2896, 2897, 2898, 2899, 2900, 2901, 2902, 2903, 2904, 2905, 2906, 2907, 2908, 2909, 2910, 2911, 2912, 2913, 2914, 2915, 2916, 2917, 2918, 2919, 2920, 2921, 2922, 2923, 2924, 2925, 2926, 2927, 2928, 2929, 2930, 2931, 2932, 2933, 2934, 2935, 2936, 2937, 2938, 2939, 2940, 2941, 2942, 2943, 2944, 2945, 2946, 2947, 2948, 2949, 2950, 2951, 2952, 2953, 2954, 2955, 2956, 2957, 2958, 2959, 2960, 2961, 2962, 2963, 2964, 2965, 2966, 2967, 2968, 2969, 2970, 2971, 2972, 2973, 2974, 2975, 2976, 2977, 2978, 2979, 2980, 2981, 2982, 2983, 2984, 2985, 2986, 2987, 2988, 2989, 2990, 2991, 2992, 2993, 2994, 2995, 2996, 2997, 2998, 2999, 3000). The right side features a large open area labeled 'OPEN TO BELOW' and a 'MECHANICAL' room. The bottom section includes a 'NO FLOOR' area and a 'MECHANICAL' room. The plan also shows various stairwells, elevators, and a central corridor system.

George JHS 1st Floor

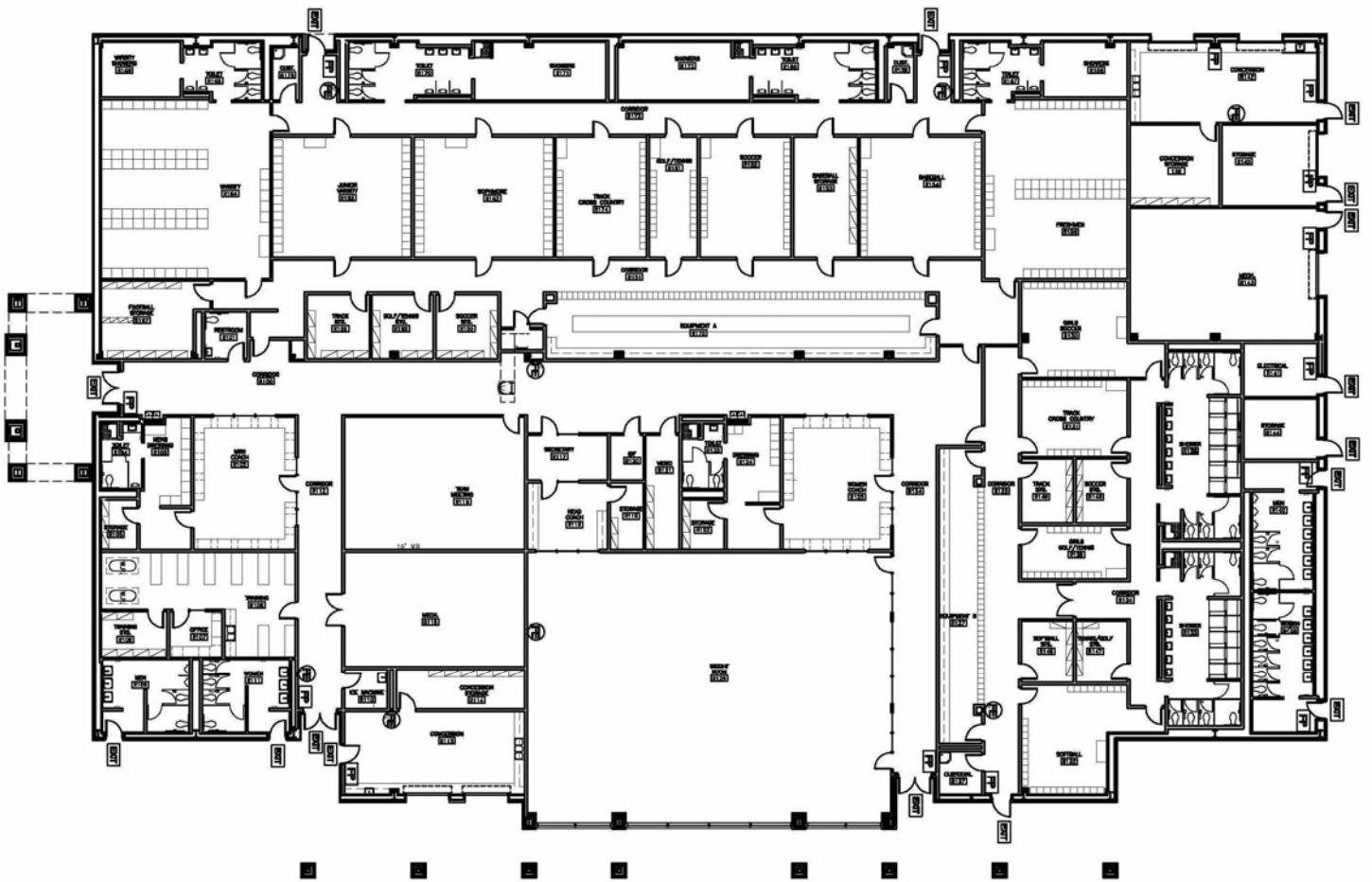


George JHS
2nd Floor

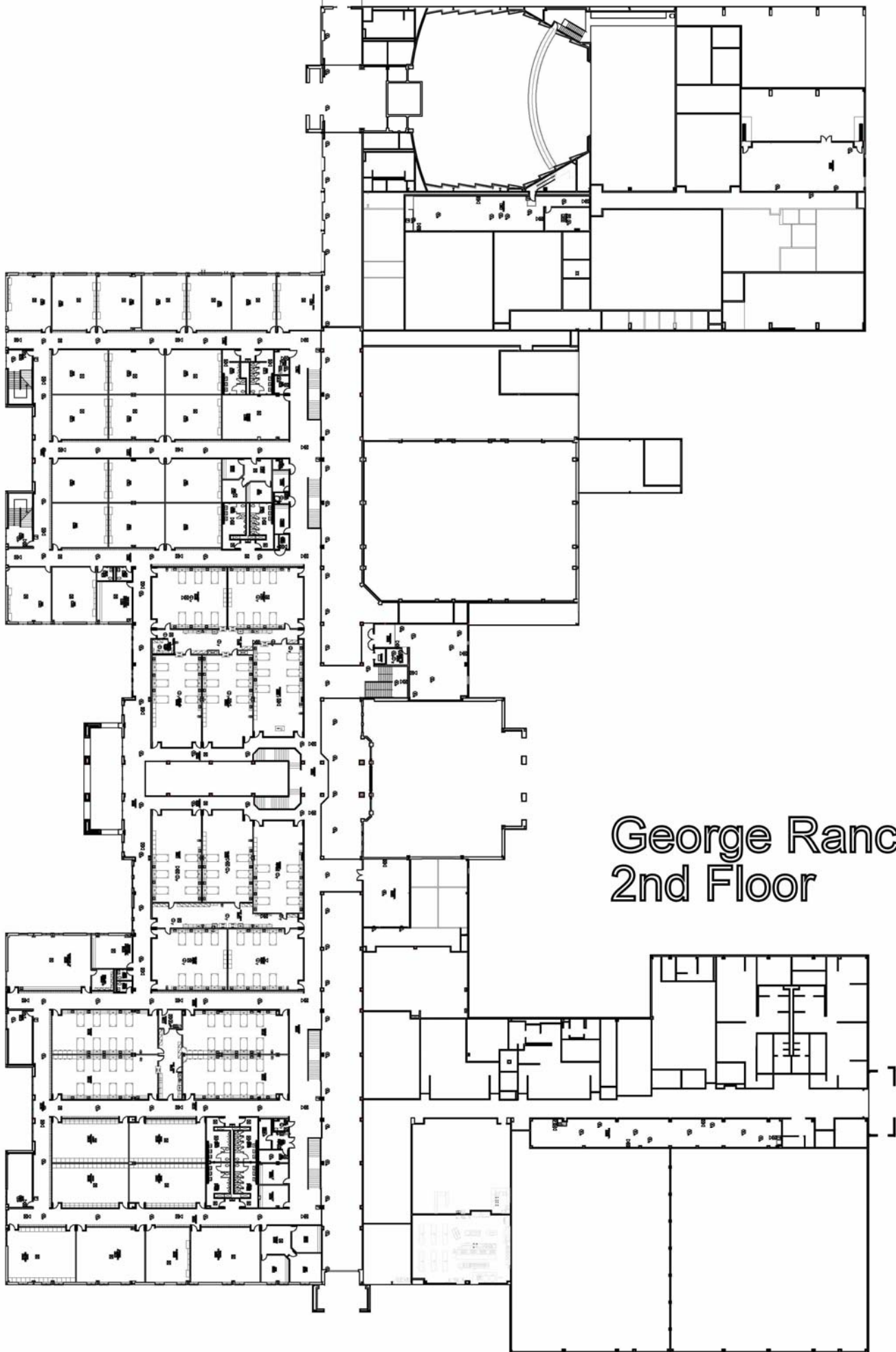




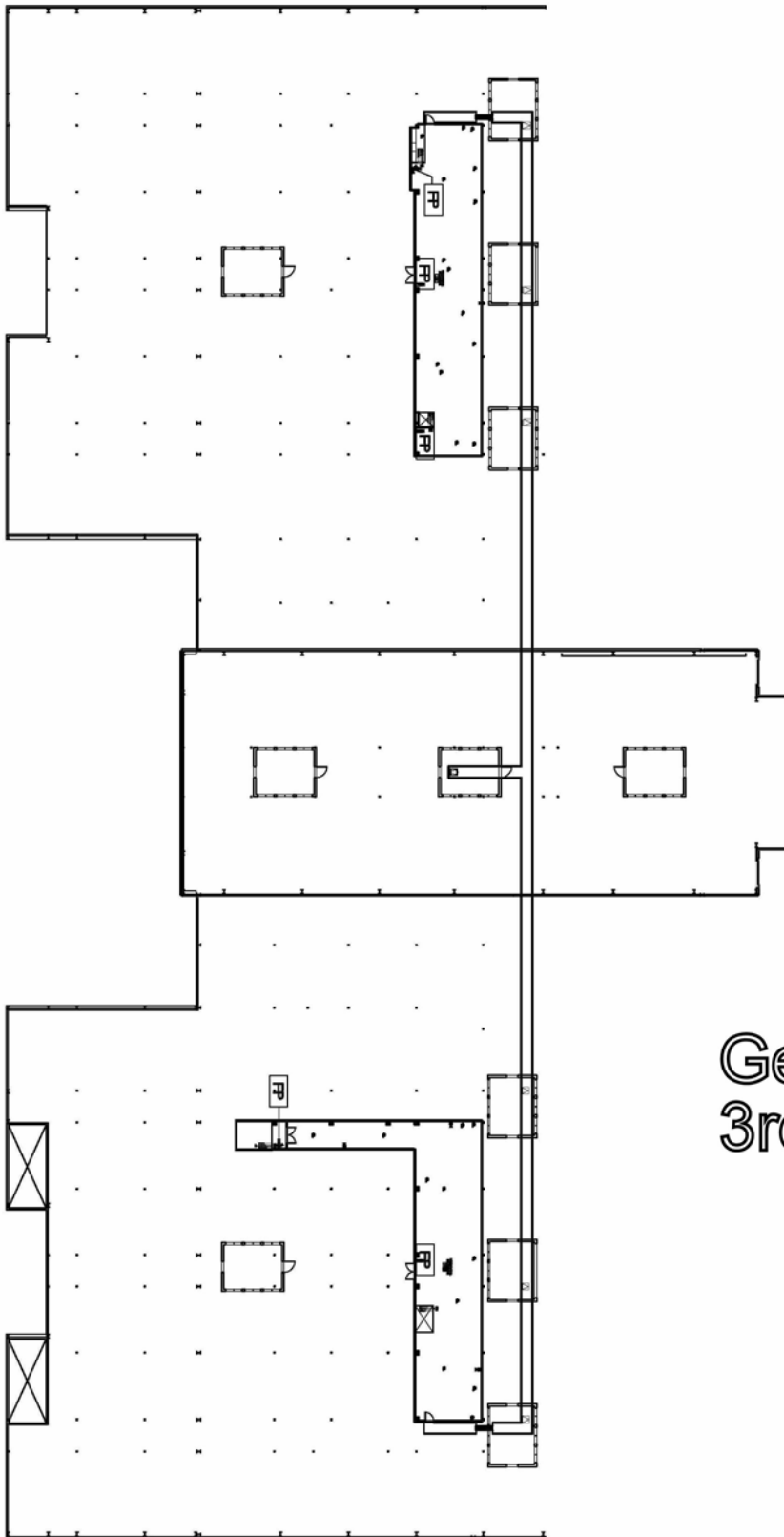
George Ranch HS
1st Floor



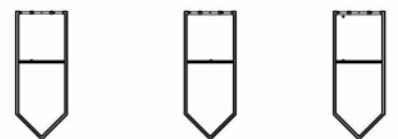
George Ranch HS
Field House



George Ranch HS
2nd Floor



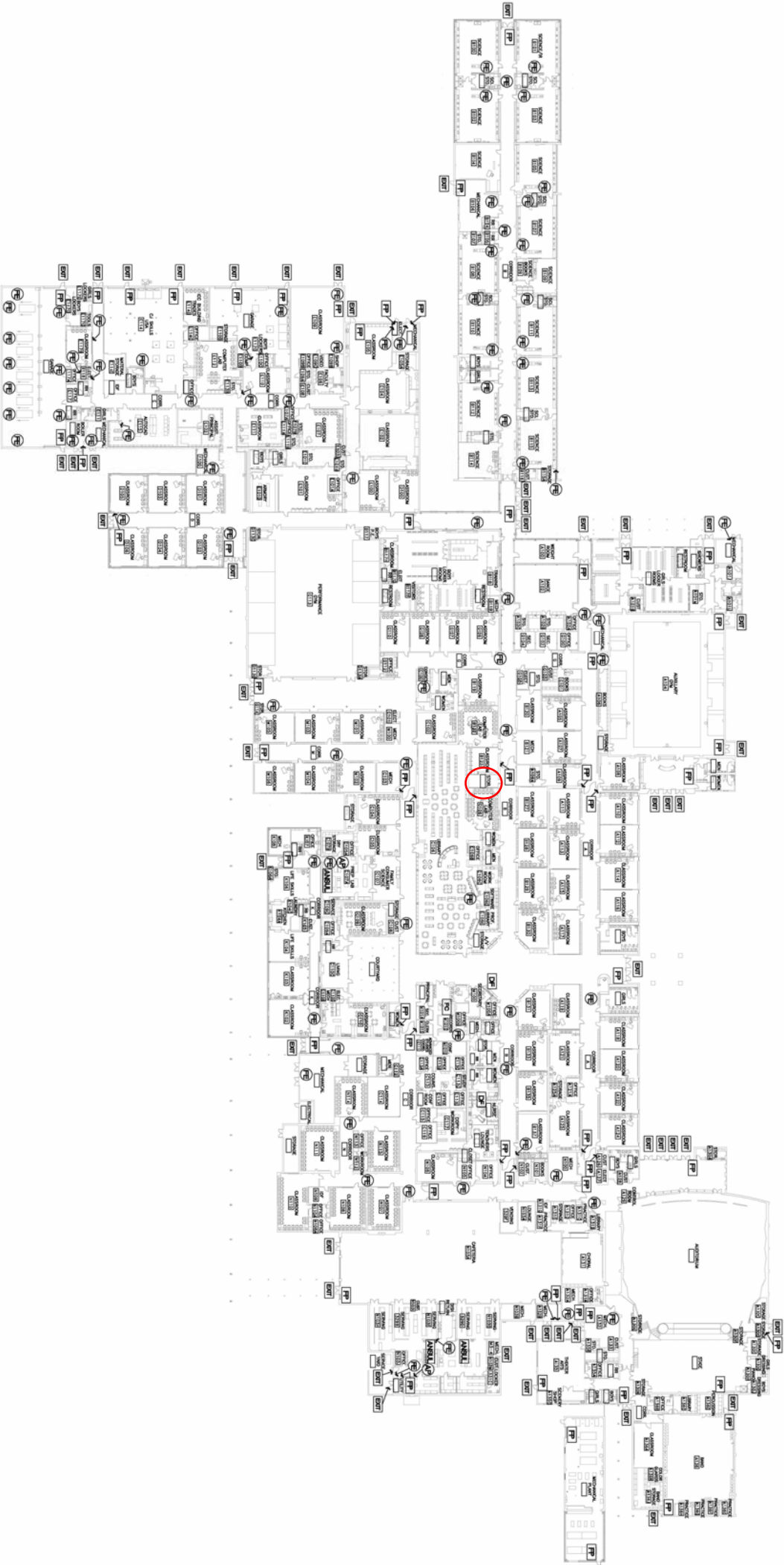
George Ranch HS
3rd Floor



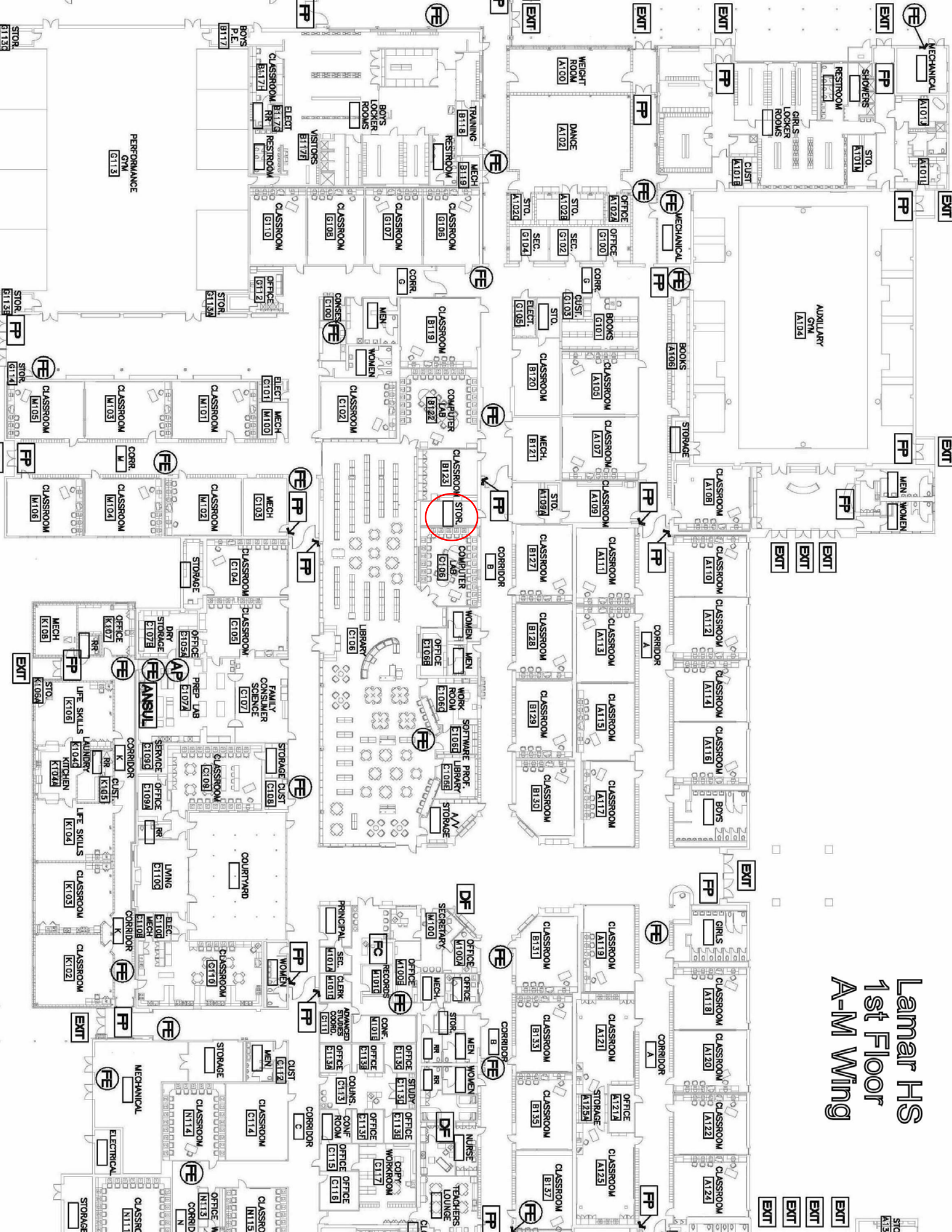


Emergency Plans Legend

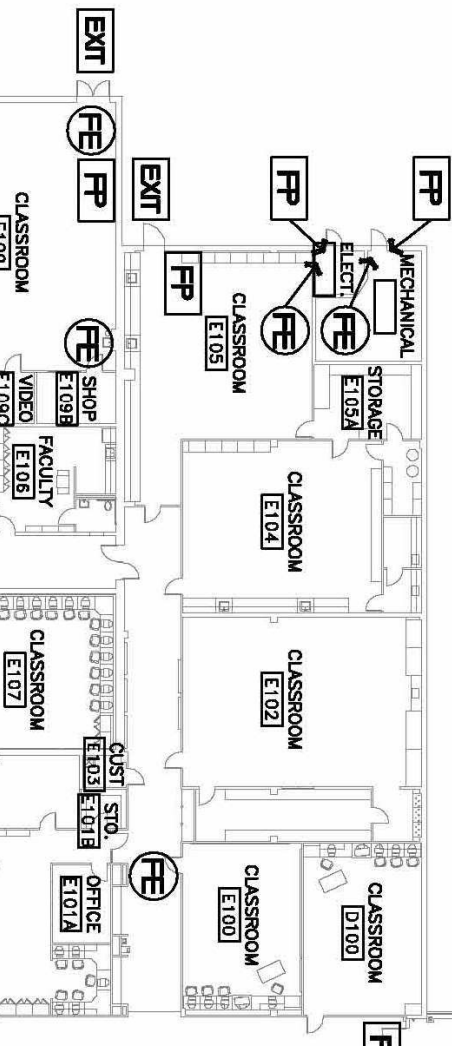
- ☐ FPE ROLL
- ⊕ FPE EXTINGUISHER
- ⊖ FPE CONTROL PANEL
- Ⓜ ANSI XL BOX
- Ⓜ ANSI XL ROLL
- Ⓜ COMMUNICATION
- Ⓜ FPE HYDRANT
- EXIT

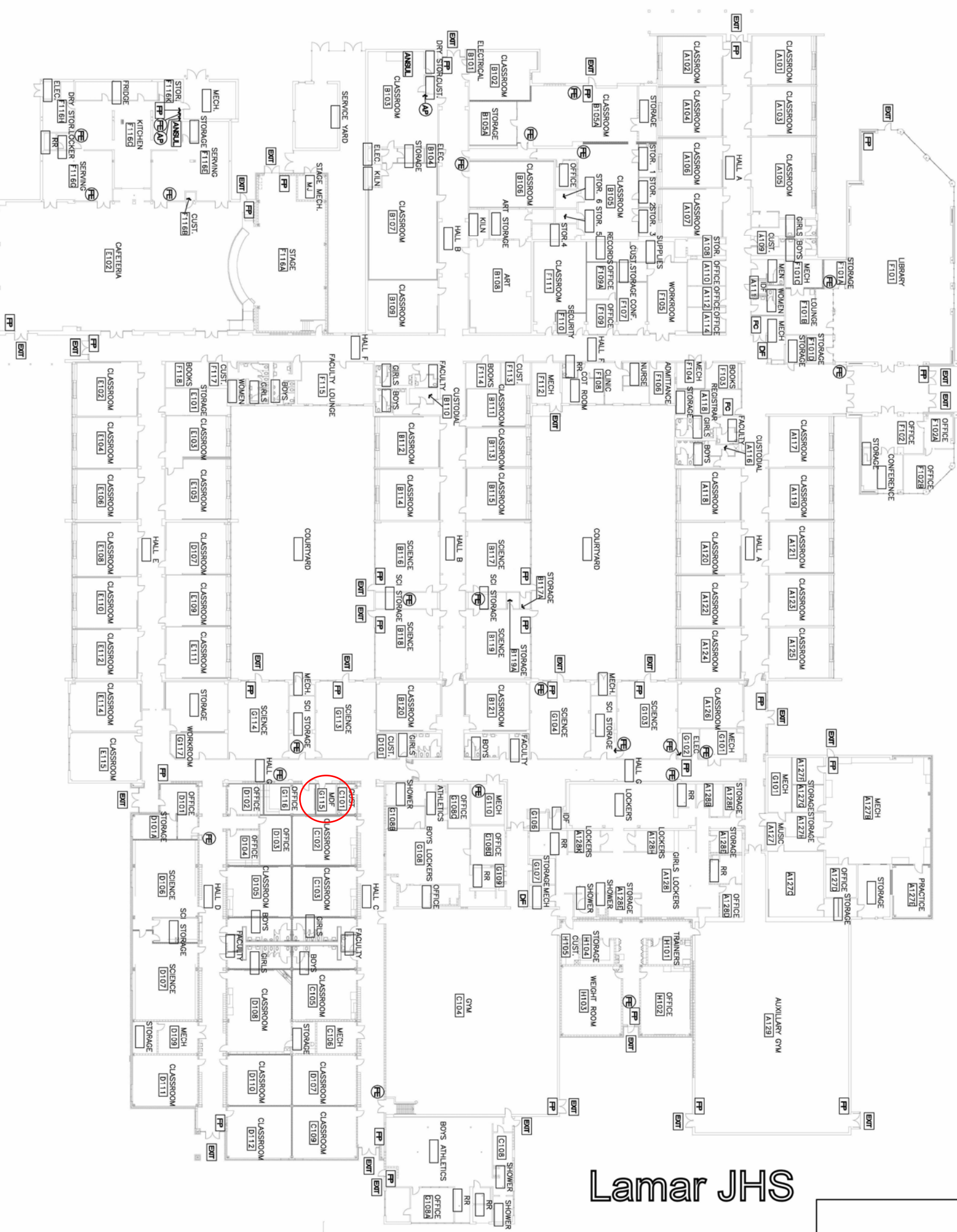


Lamar HS
1st Floor
A-M Wing





[illegible]



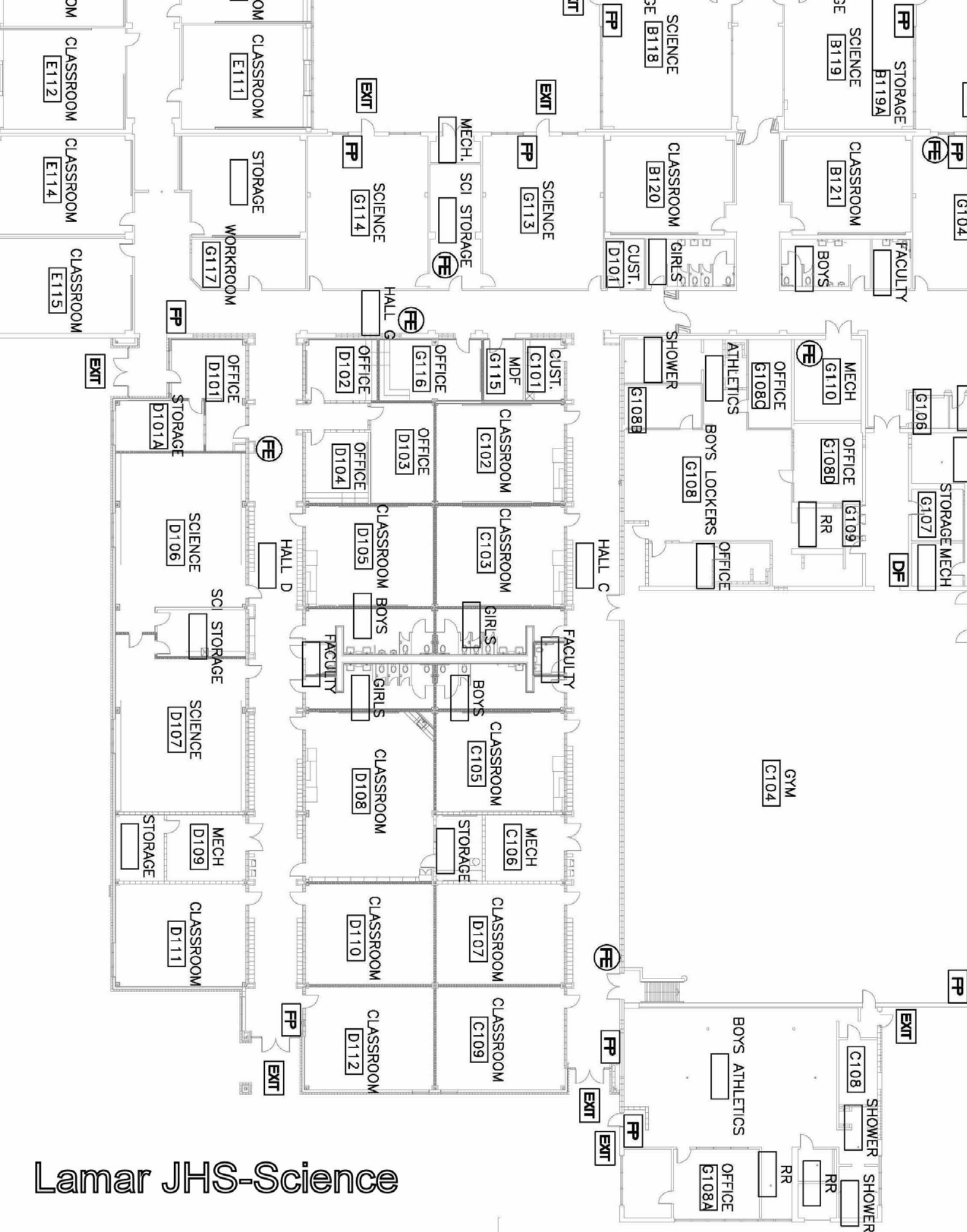
Lamar JHS

Lamar JHS - Cafe

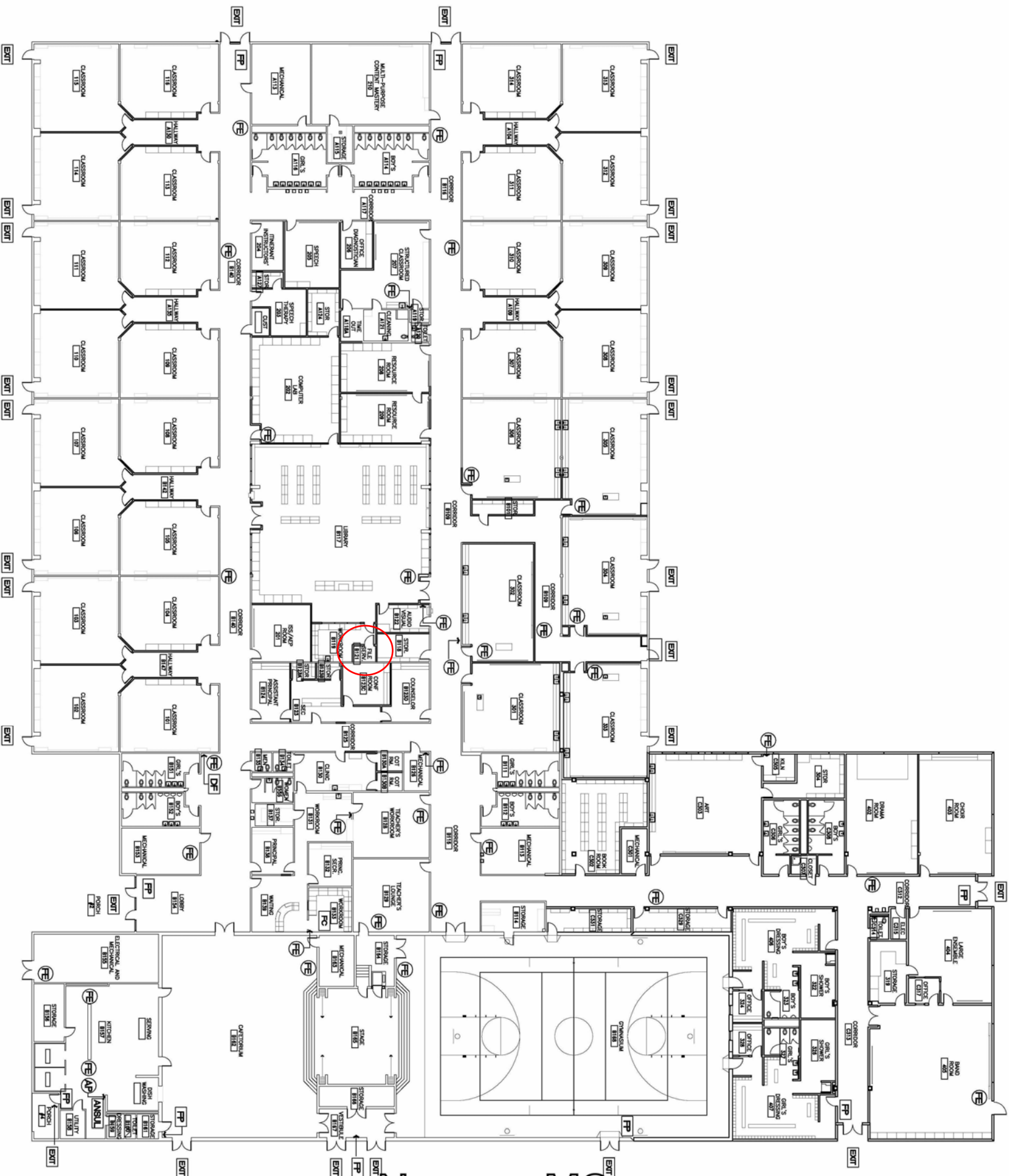
The floor plan of Lamar JHS - Cafe is divided into several main sections. At the top, there is a large area containing a CLASSROOM (B102), STORAGE (B105A), ELECTRICAL (B101), ART STORAGE (B108), ART (B108), KILN, HALL B, and a large CLASSROOM (B107). To the right of this area is a SERVICE YARD and a STAGE MECH. (MJ) room. Below the top section is a large STAGE (F116A) with a curved front. To the left of the stage is a MECH. room, STORAGE (F116E), SERVING, CUST. (F116B), and a KITCHEN (F116C) with a FRIDGE. Further left is a CAFETERIA (E102) and a DRY STOR. LOCKER (F116G). At the bottom of the plan is a large FACULTY LOUNGE (F115) with a CUST. (F117) room, BOOKS (F118), and restrooms for BOYS, GIRLS, and WOMEN. To the right of the faculty lounge is a COURTYARD. The bottom right section contains several CLASSROOMS (B112, B113, B114, B115), SCIENCE (B116, B117, B118, B119), and STORAGE (B119A) rooms. There are also several HALLS (F, B, E) and multiple EXIT points throughout the building.



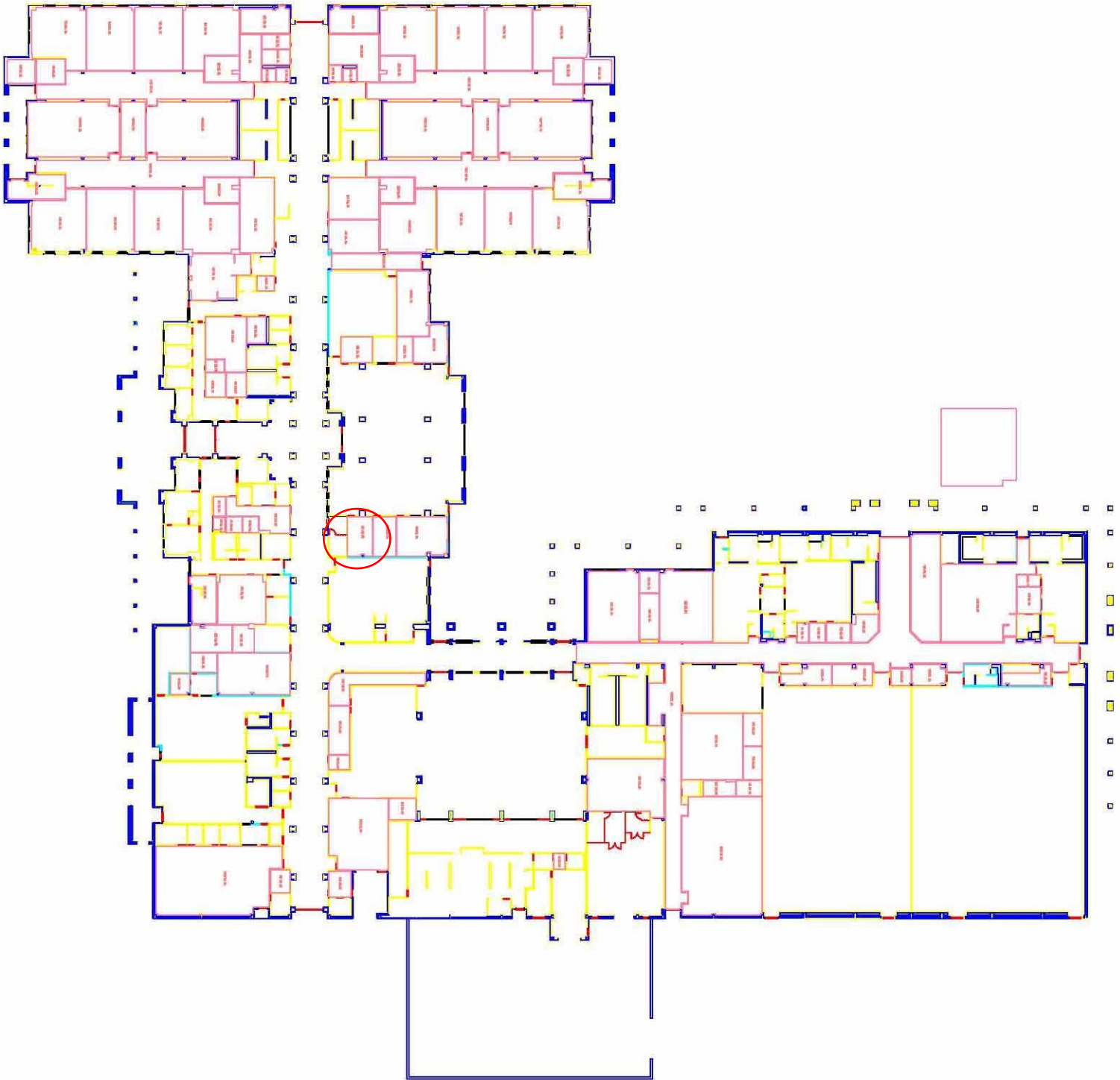
Lamar JHS-Gym



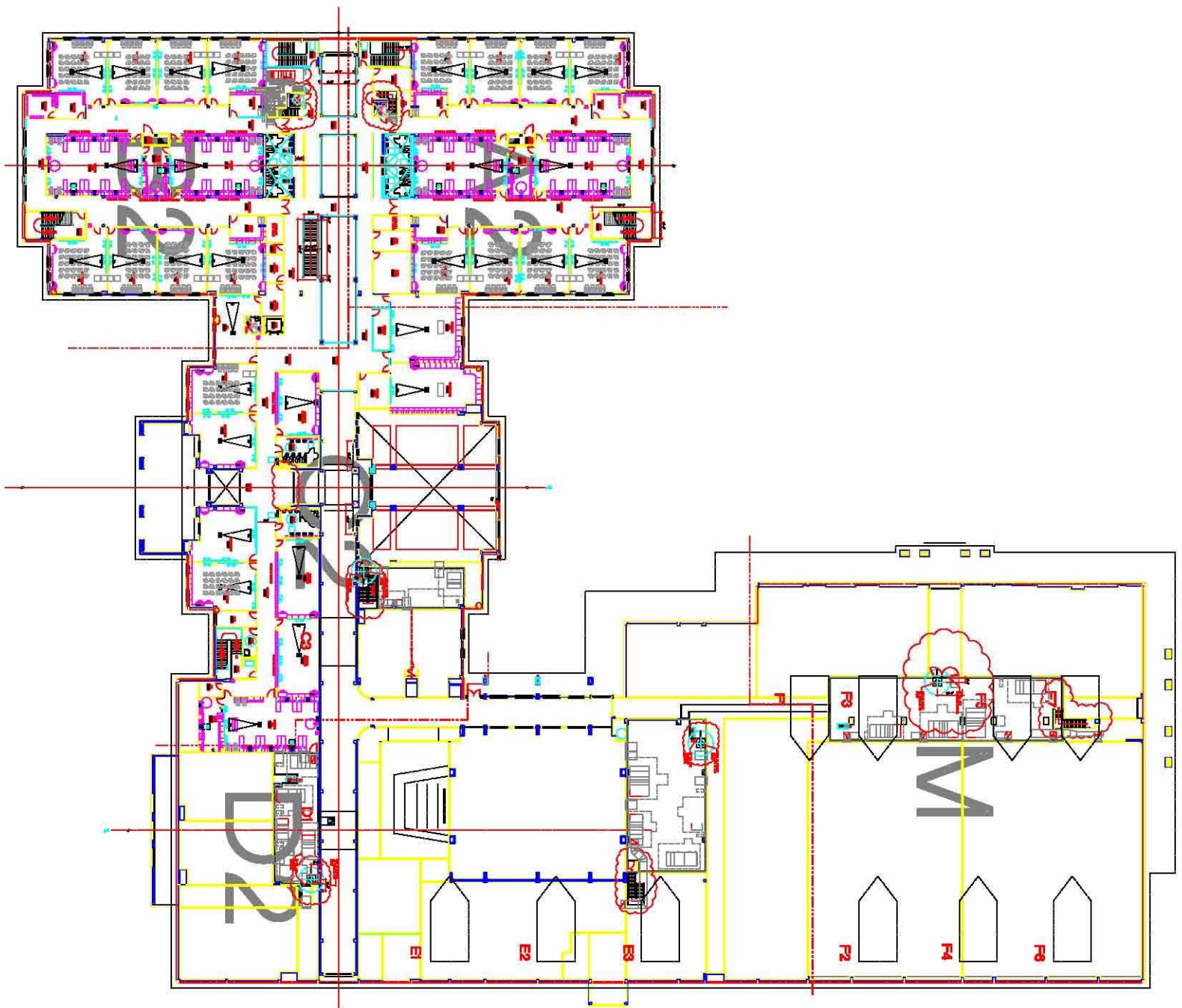
Lamar JHS-Science



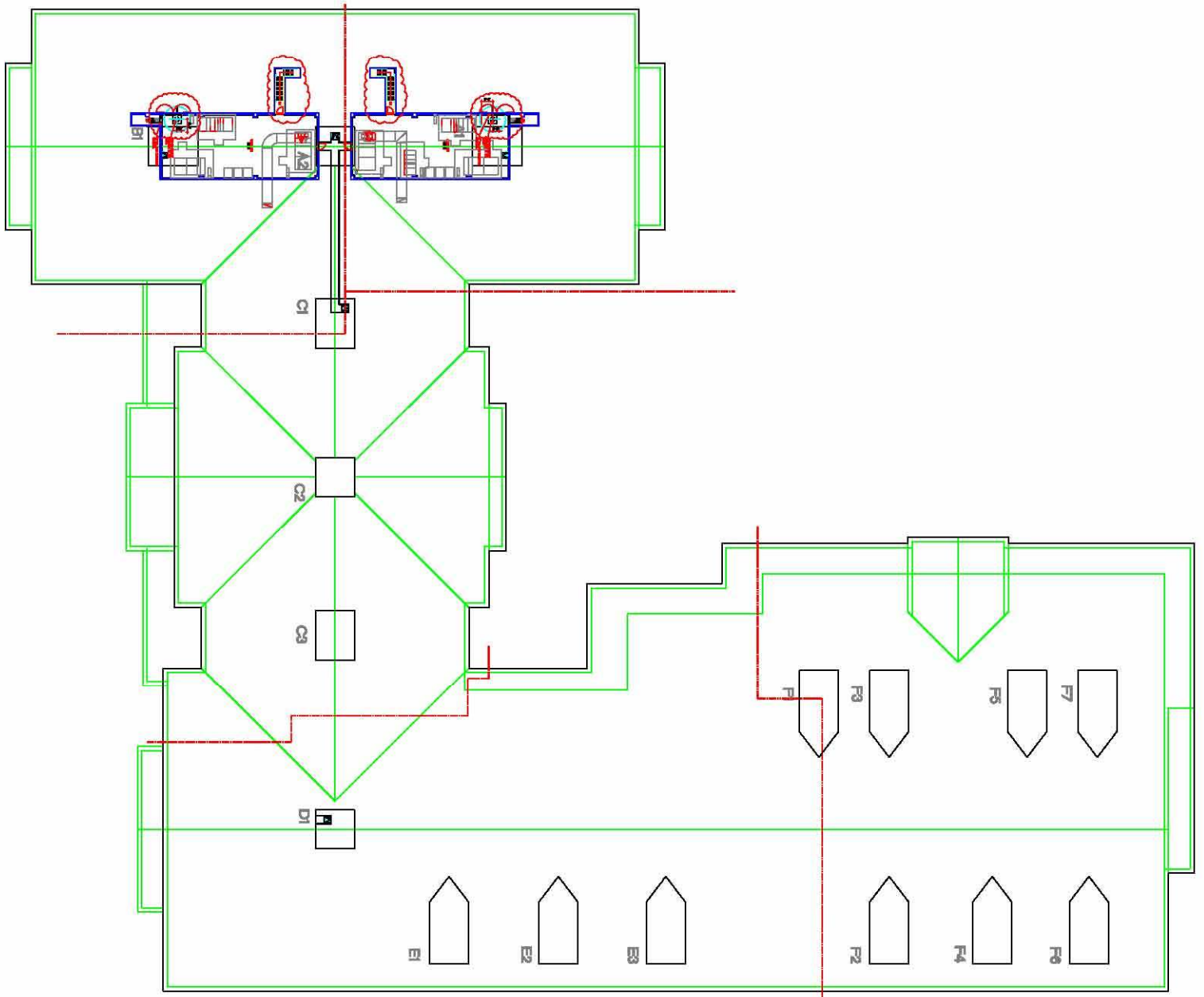
Navarro MS



Reading JHS
1st Floor

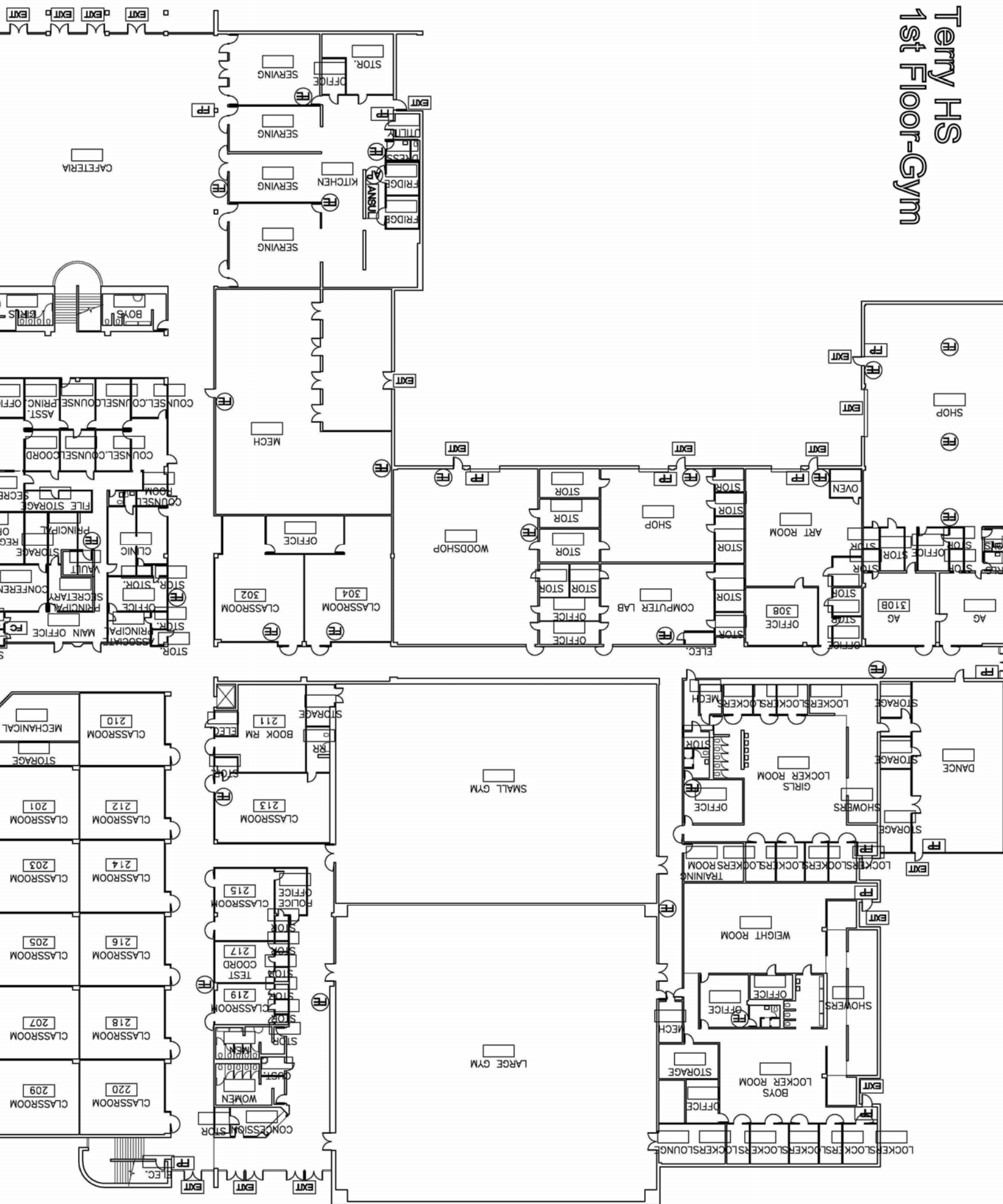


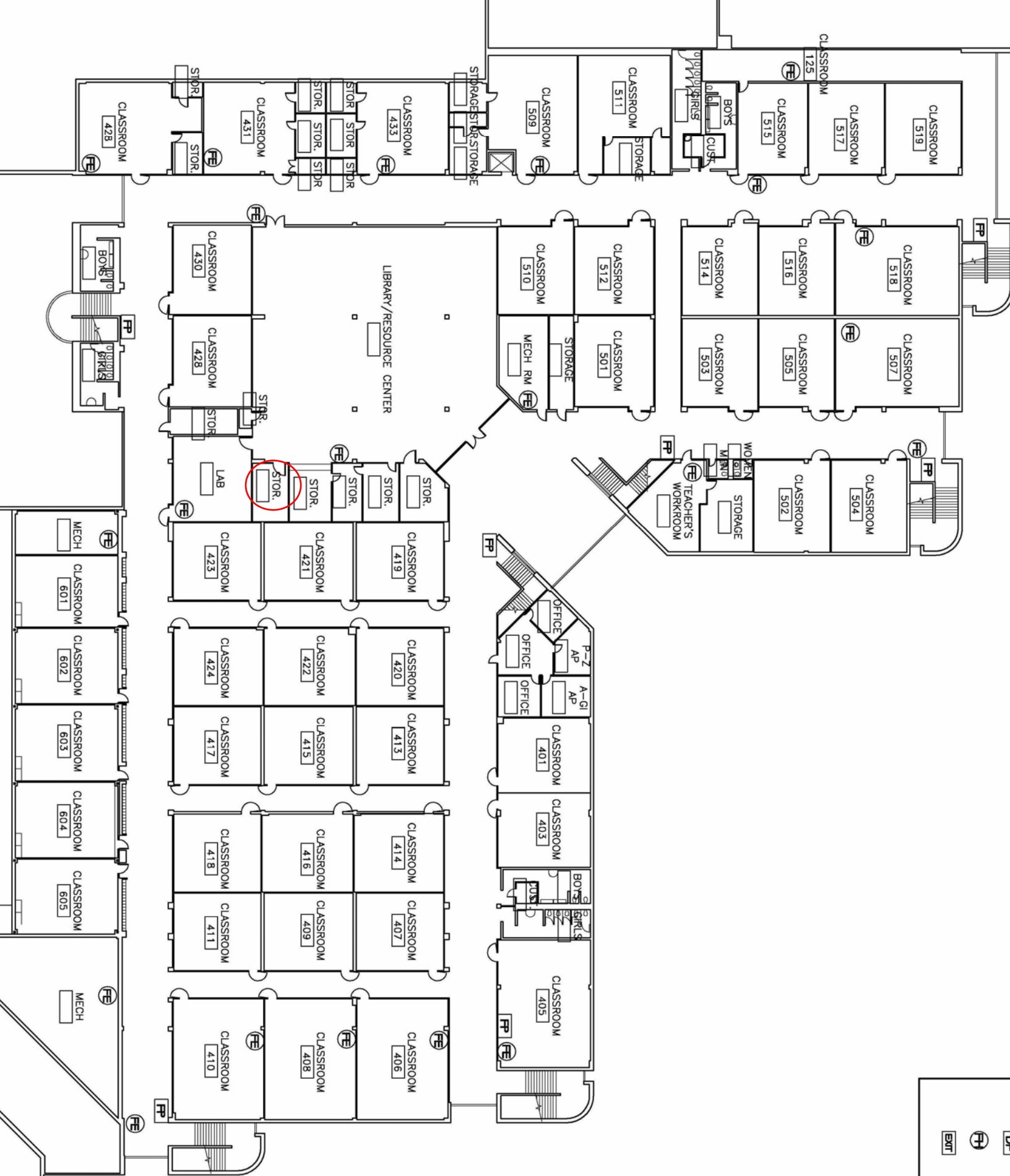
Reading JHS
2nd Floor



Reading JHS
3rd Floor

Terry HS 1st Floor-Gym



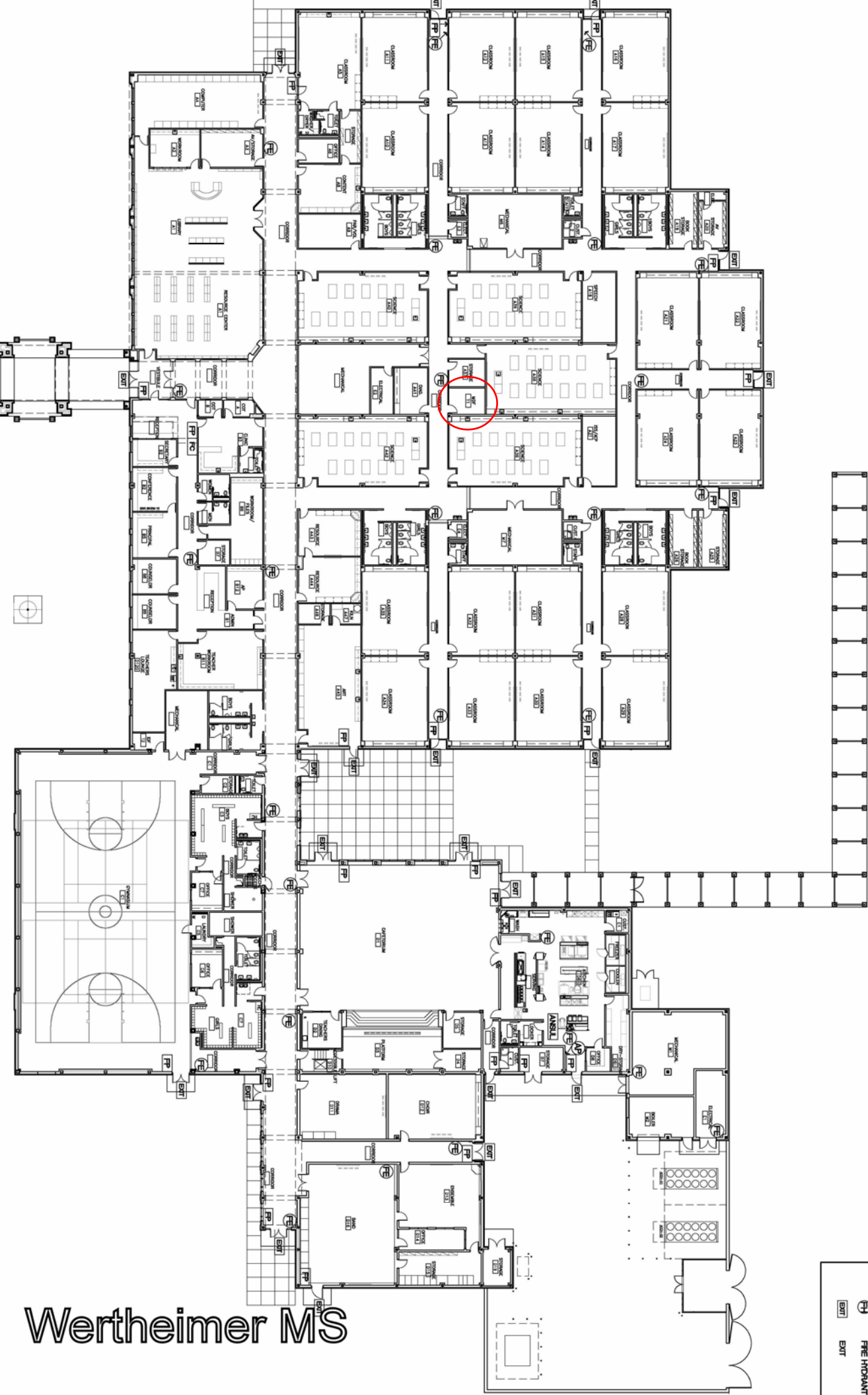


Terry HS 2nd Floor

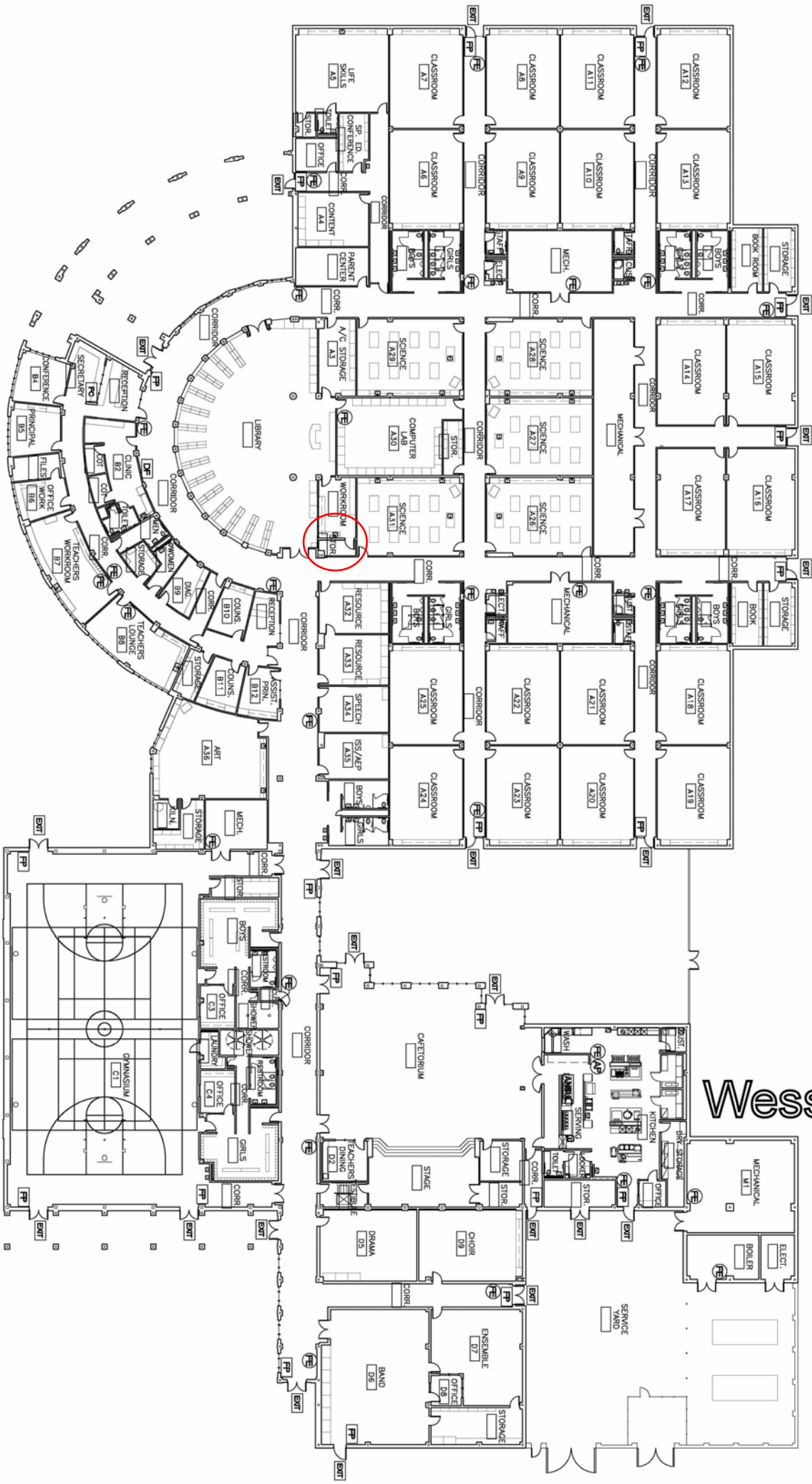
EXIT
FIRE HYDRANT
EXIT

Emergency Plans Legend

- FP FIRE PULL
- FE FIRE EXTINGUISHER
- FC FIRE CONTROL
- ANSB ANSUL BOX
- ANSF ANSUL PULL
- DF DEFIBRILLATOR
- FI FIRE HYDRANT
- EXIT



Wertheimer MS



Wessendorf MS