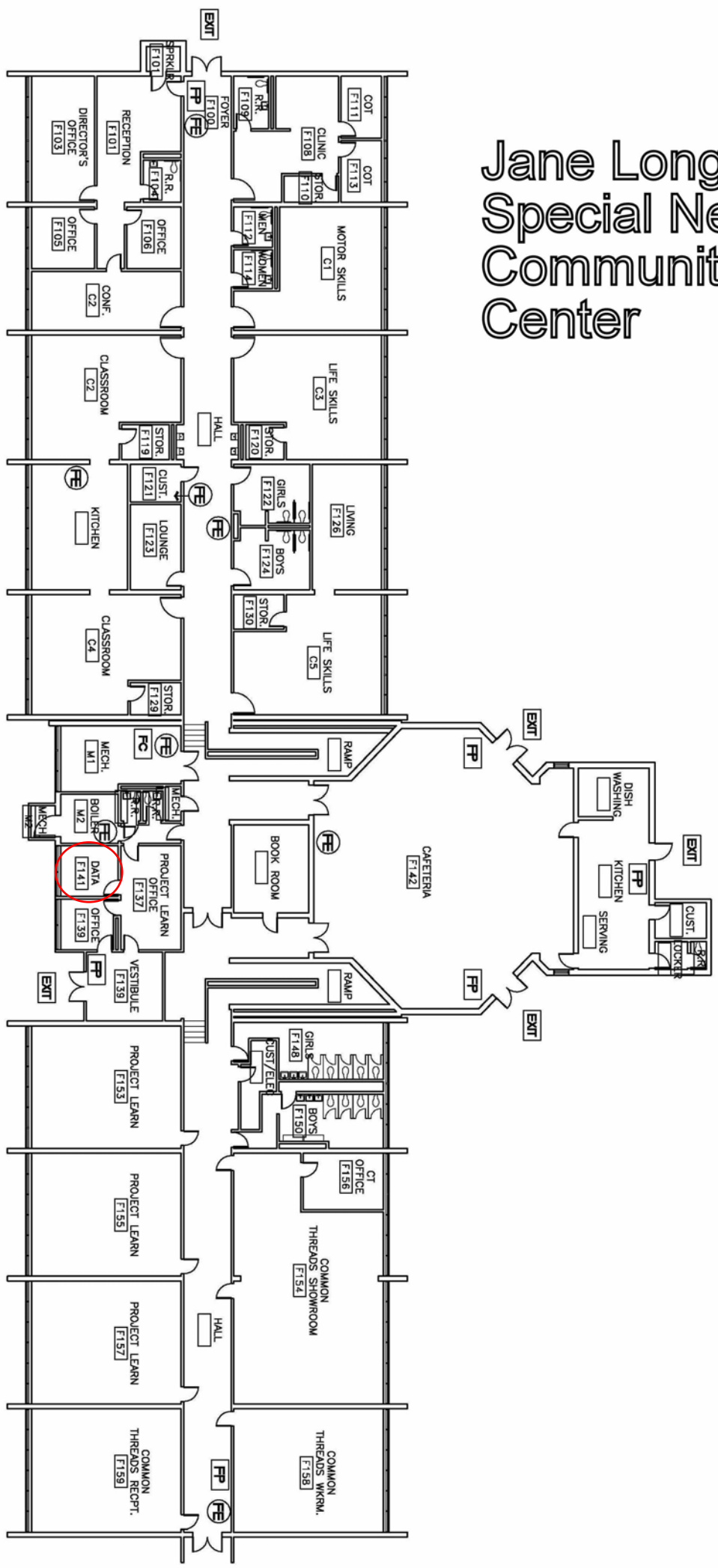
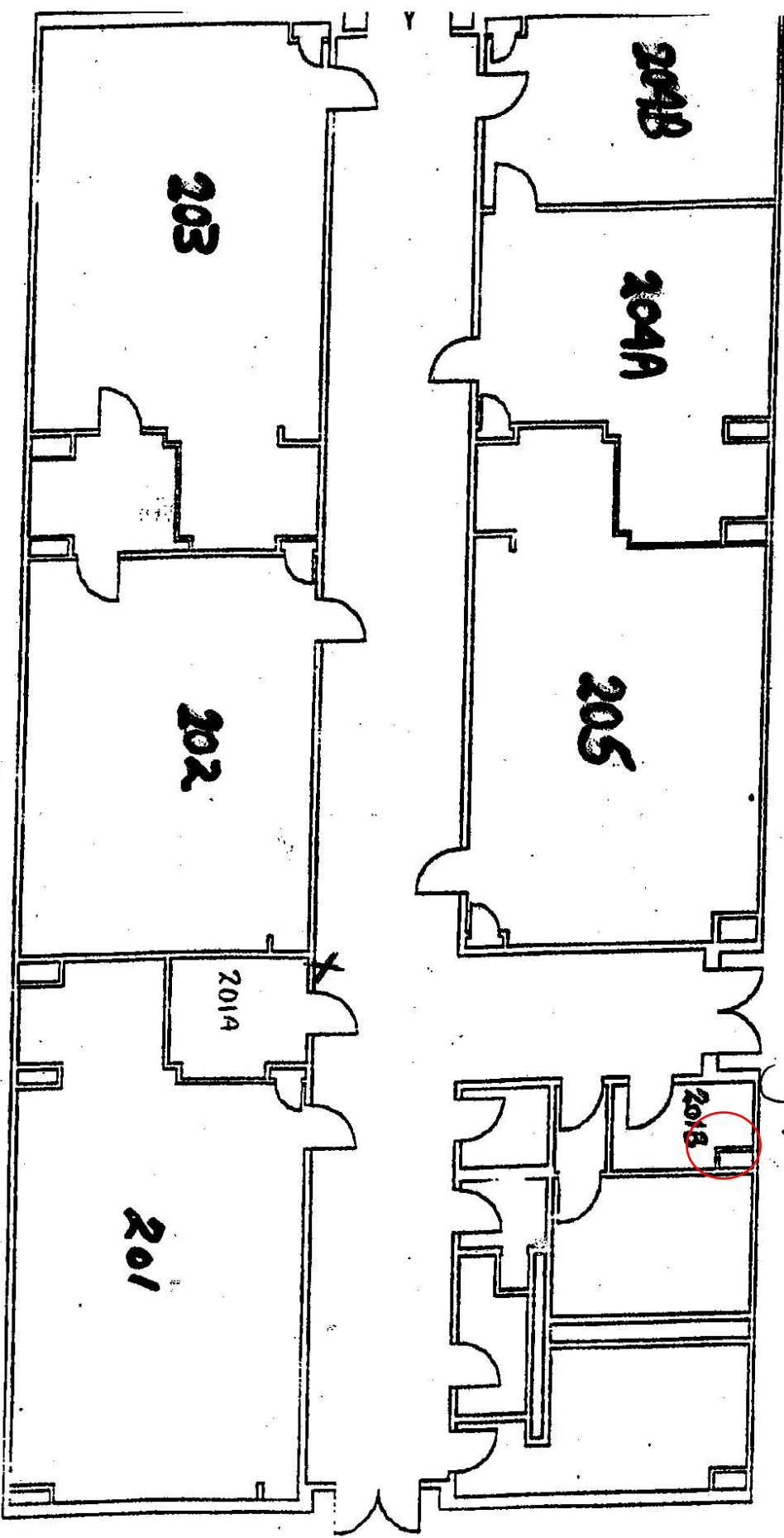


Jane Long Special Needs Community Center

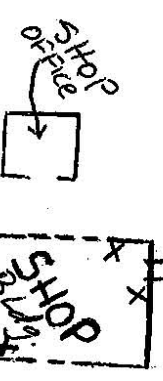


X = Extinguisher Station

Alternative Learning Center Annex Building, houses T.H.

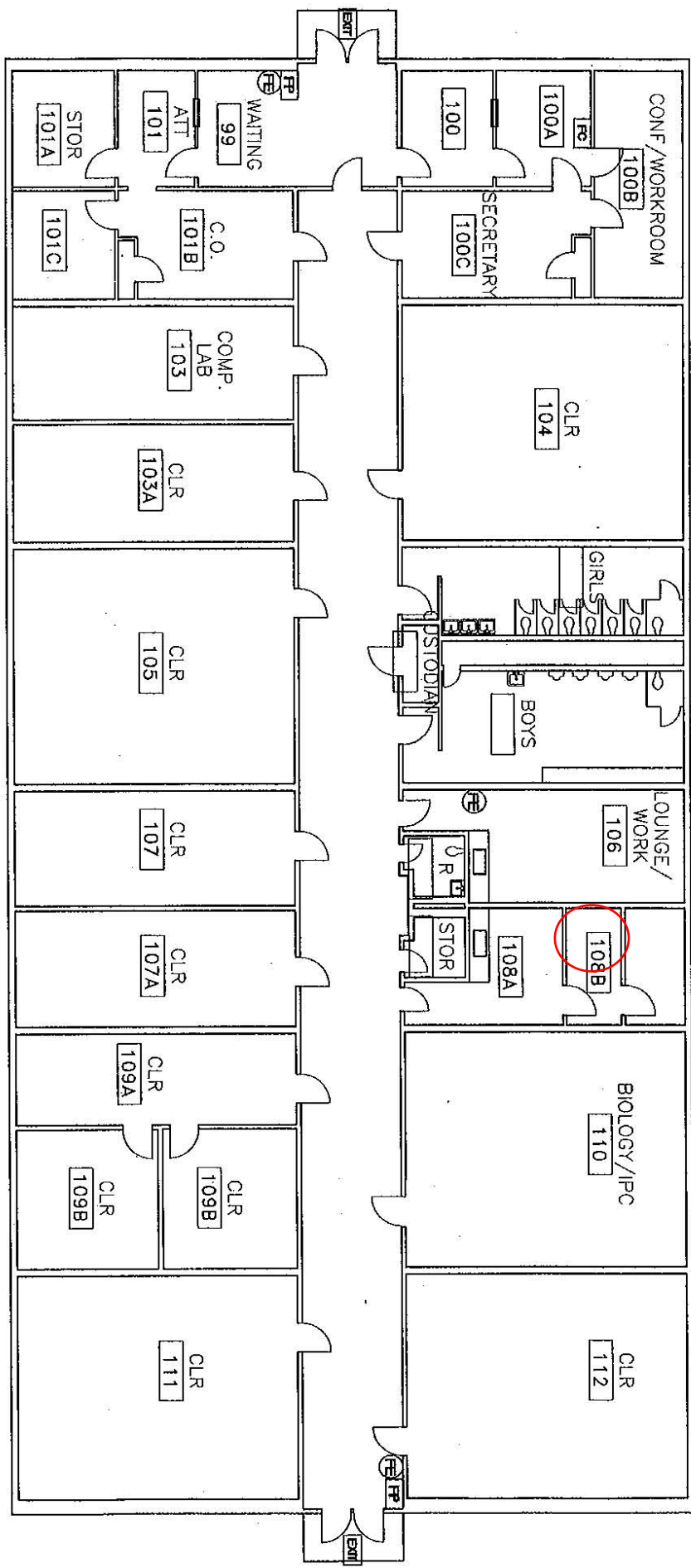


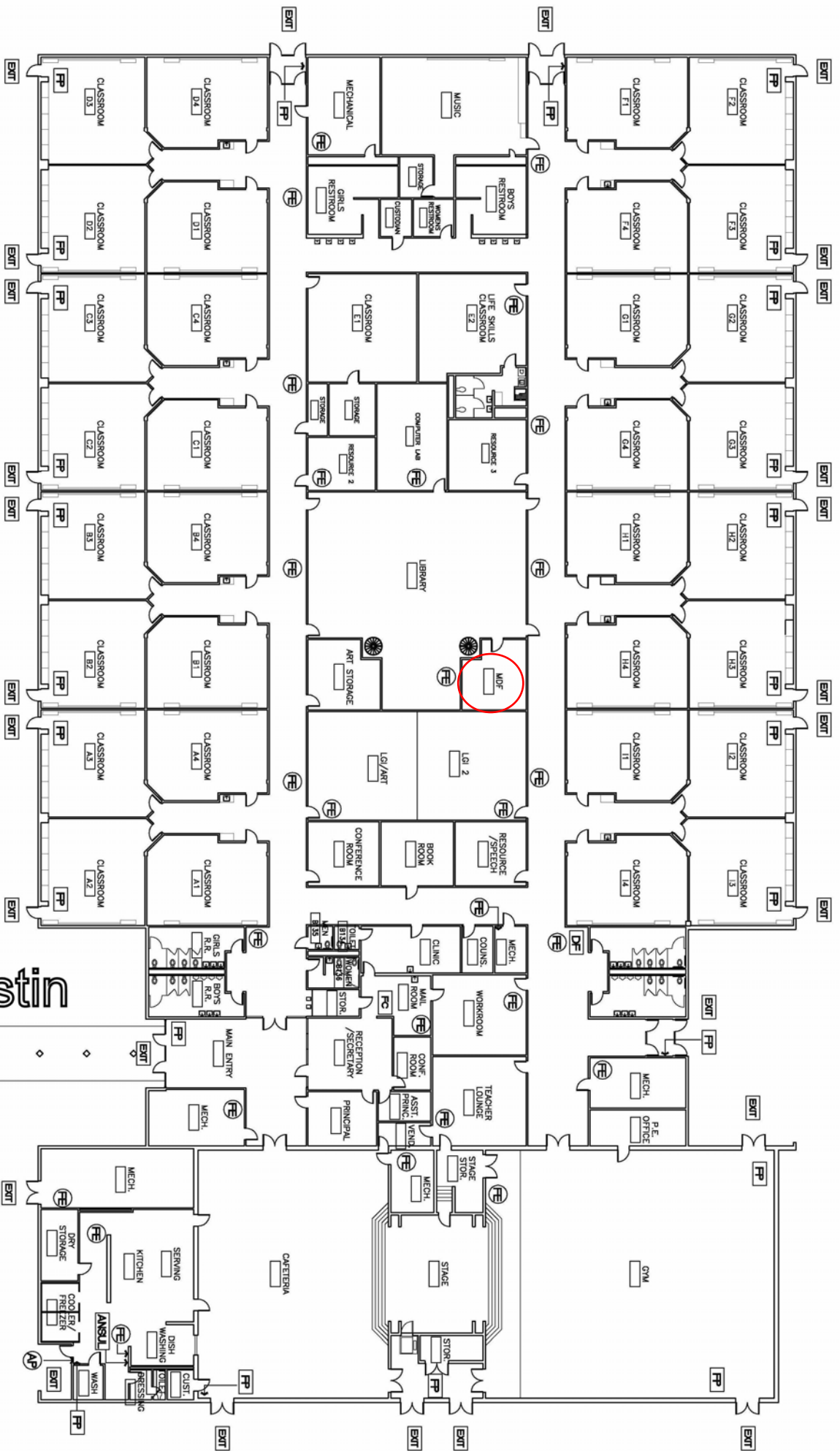
0 10 20 30



Alternative Learning Center
Main Building
houses H.S. & front office

Alternative Learning Center





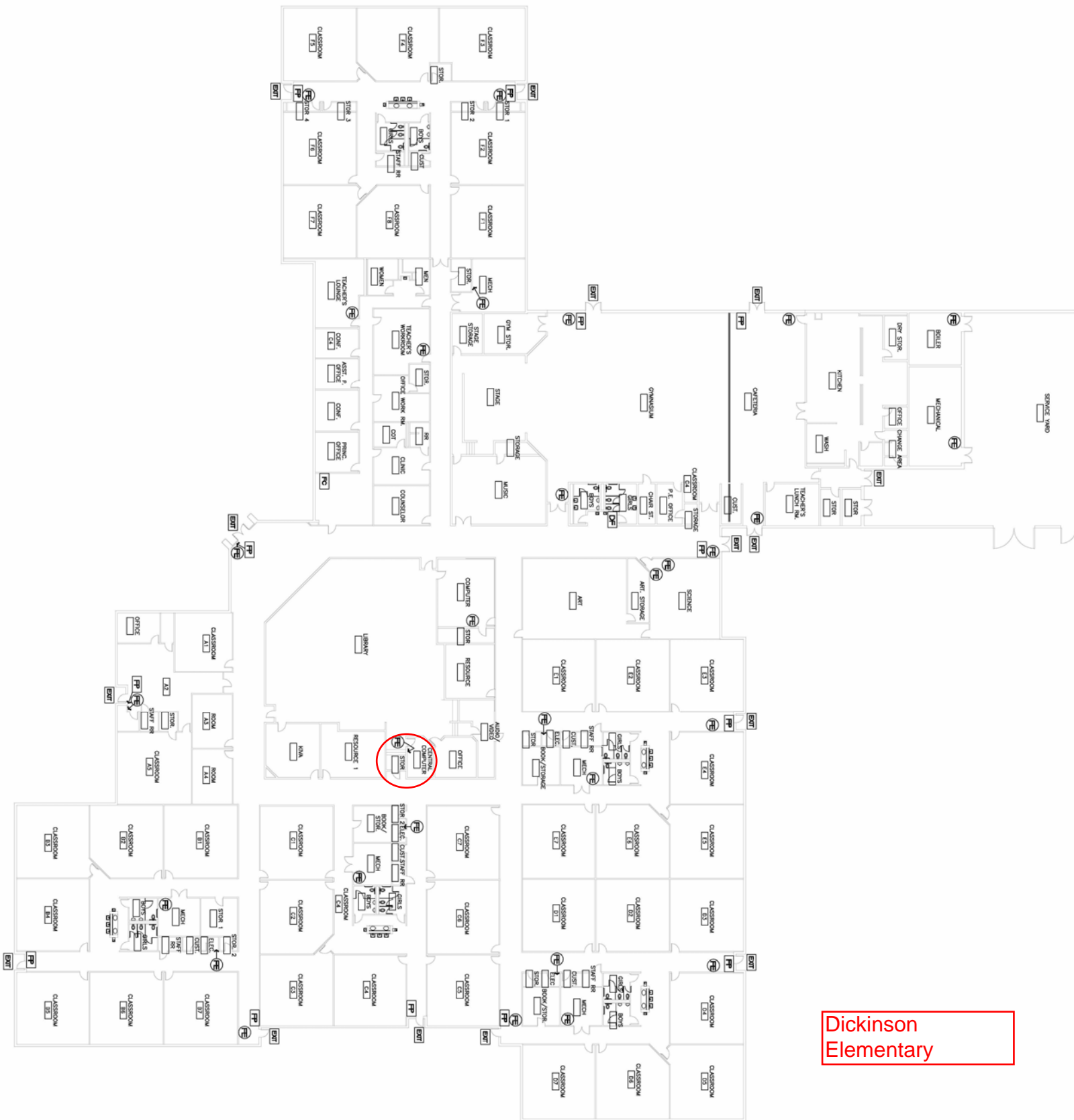
Austin

The floor plan shows a complex layout of a school building. The central corridor is a key feature, providing access to various rooms and exits. The rooms are organized into several wings, with classrooms and specialized rooms like the library and cafeteria. The red circle highlights a room labeled 'UPF STORAGE' located near the center of the plan. The plan also includes numerous exits and fire exits, ensuring safety for all occupants.

This is a detailed architectural floor plan of a school building. The plan is oriented with a north arrow pointing towards the top right. The building is divided into several main sections:

- Top Section:** Contains a large **GYMNASIUM** and a **CAFETERIA**. To the right of the cafeteria is a **RESTROOM** and a **LOCKER** area. Below the cafeteria is a **CLUB** and a **MEETING** room.
- Central Section:** Features a large **RECEPTION** area, a **STORAGE** room, and a **CLERK** office. A red circle highlights a specific area in the central corridor.
- Bottom Section:** Contains a large **CLASSROOM** area with multiple rooms numbered 1 through 10. There are also several **CLASSROOM** rooms numbered 11 through 20. A **LABORATORY** is located near the bottom center.
- Left Section:** Includes a **RECEPTION** area, a **STORAGE** room, and a **CLERK** office. There are also several **CLASSROOM** rooms numbered 21 through 30.
- Right Section:** Contains a **RECEPTION** area, a **STORAGE** room, and a **CLERK** office. There are also several **CLASSROOM** rooms numbered 31 through 40.

The plan includes numerous details such as door locations, furniture arrangements, and room numbers. A red circle highlights a specific area in the central corridor, which appears to be a small room or a specific section of the corridor.



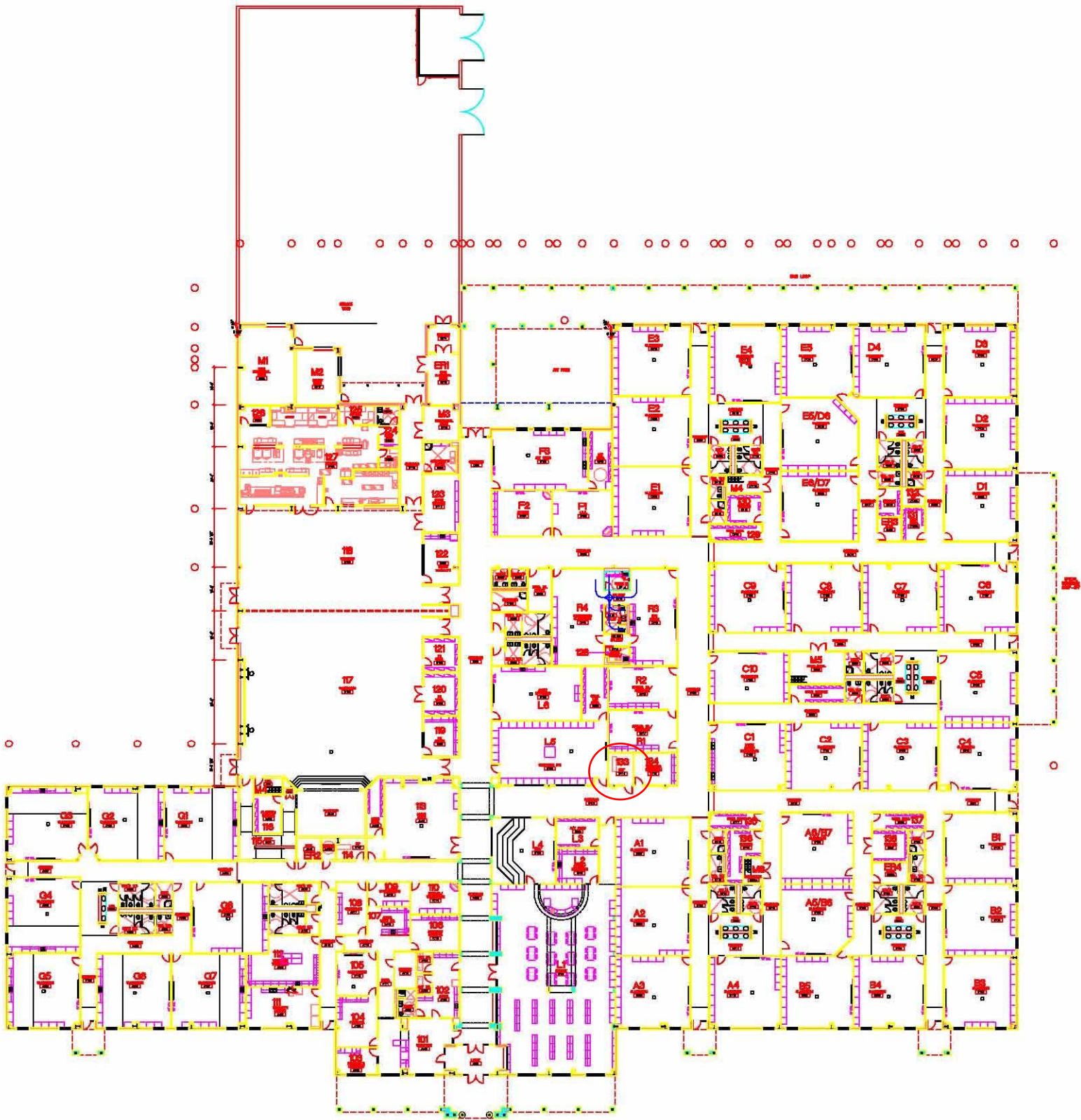
Dickinson
Elementary

Emergency Plans Legend

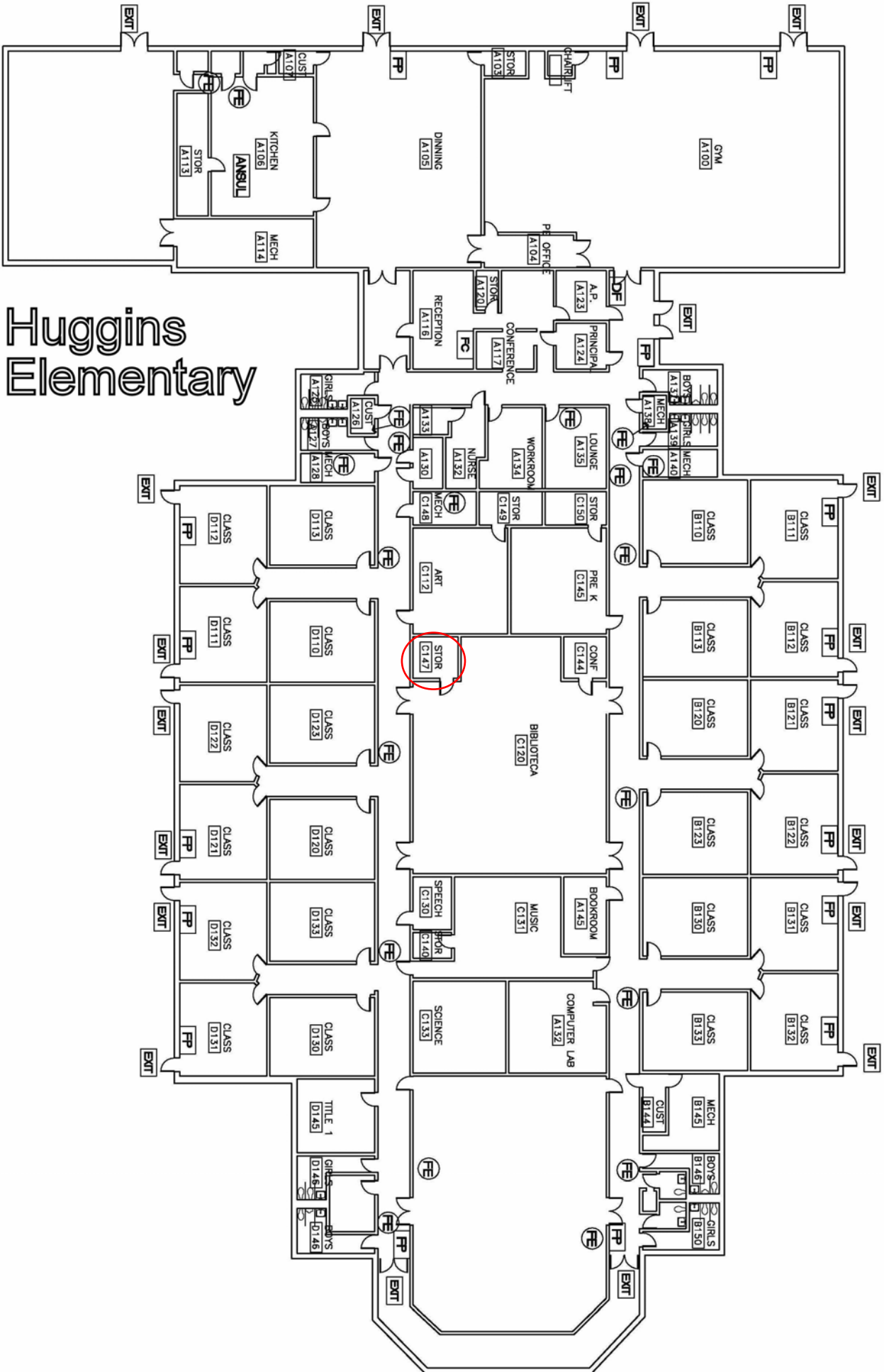
- FIRE PULL
- FIRE EXTINGUISHER
- FIRE CONTROL PANEL
- ANSI BOX
- ANSI PULL
- DEFIBRILLATOR
- FIRE HYDRANT
- EXIT

This is a detailed architectural floor plan of a school building. The plan is oriented with a north arrow pointing towards the top-left. The building layout includes a central corridor system connecting various rooms. On the left side, there is a large playground area. The central part of the building contains numerous classrooms, some labeled with numbers (e.g., 1.1, 1.2, 1.3, 1.4, 1.5, 1.6, 1.7, 1.8, 1.9, 1.10, 1.11, 1.12, 1.13, 1.14, 1.15, 1.16, 1.17, 1.18, 1.19, 1.20, 1.21, 1.22, 1.23, 1.24, 1.25, 1.26, 1.27, 1.28, 1.29, 1.30, 1.31, 1.32, 1.33, 1.34, 1.35, 1.36, 1.37, 1.38, 1.39, 1.40, 1.41, 1.42, 1.43, 1.44, 1.45, 1.46, 1.47, 1.48, 1.49, 1.50, 1.51, 1.52, 1.53, 1.54, 1.55, 1.56, 1.57, 1.58, 1.59, 1.60, 1.61, 1.62, 1.63, 1.64, 1.65, 1.66, 1.67, 1.68, 1.69, 1.70, 1.71, 1.72, 1.73, 1.74, 1.75, 1.76, 1.77, 1.78, 1.79, 1.80, 1.81, 1.82, 1.83, 1.84, 1.85, 1.86, 1.87, 1.88, 1.89, 1.90, 1.91, 1.92, 1.93, 1.94, 1.95, 1.96, 1.97, 1.98, 1.99, 2.00, 2.01, 2.02, 2.03, 2.04, 2.05, 2.06, 2.07, 2.08, 2.09, 2.10, 2.11, 2.12, 2.13, 2.14, 2.15, 2.16, 2.17, 2.18, 2.19, 2.20, 2.21, 2.22, 2.23, 2.24, 2.25, 2.26, 2.27, 2.28, 2.29, 2.30, 2.31, 2.32, 2.33, 2.34, 2.35, 2.36, 2.37, 2.38, 2.39, 2.40, 2.41, 2.42, 2.43, 2.44, 2.45, 2.46, 2.47, 2.48, 2.49, 2.50, 2.51, 2.52, 2.53, 2.54, 2.55, 2.56, 2.57, 2.58, 2.59, 2.60, 2.61, 2.62, 2.63, 2.64, 2.65, 2.66, 2.67, 2.68, 2.69, 2.70, 2.71, 2.72, 2.73, 2.74, 2.75, 2.76, 2.77, 2.78, 2.79, 2.80, 2.81, 2.82, 2.83, 2.84, 2.85, 2.86, 2.87, 2.88, 2.89, 2.90, 2.91, 2.92, 2.93, 2.94, 2.95, 2.96, 2.97, 2.98, 2.99, 3.00, 3.01, 3.02, 3.03, 3.04, 3.05, 3.06, 3.07, 3.08, 3.09, 3.10, 3.11, 3.12, 3.13, 3.14, 3.15, 3.16, 3.17, 3.18, 3.19, 3.20, 3.21, 3.22, 3.23, 3.24, 3.25, 3.26, 3.27, 3.28, 3.29, 3.30, 3.31, 3.32, 3.33, 3.34, 3.35, 3.36, 3.37, 3.38, 3.39, 3.40, 3.41, 3.42, 3.43, 3.44, 3.45, 3.46, 3.47, 3.48, 3.49, 3.50, 3.51, 3.52, 3.53, 3.54, 3.55, 3.56, 3.57, 3.58, 3.59, 3.60, 3.61, 3.62, 3.63, 3.64, 3.65, 3.66, 3.67, 3.68, 3.69, 3.70, 3.71, 3.72, 3.73, 3.74, 3.75, 3.76, 3.77, 3.78, 3.79, 3.80, 3.81, 3.82, 3.83, 3.84, 3.85, 3.86, 3.87, 3.88, 3.89, 3.90, 3.91, 3.92, 3.93, 3.94, 3.95, 3.96, 3.97, 3.98, 3.99, 4.00, 4.01, 4.02, 4.03, 4.04, 4.05, 4.06, 4.07, 4.08, 4.09, 4.10, 4.11, 4.12, 4.13, 4.14, 4.15, 4.16, 4.17, 4.18, 4.19, 4.20, 4.21, 4.22, 4.23, 4.24, 4.25, 4.26, 4.27, 4.28, 4.29, 4.30, 4.31, 4.32, 4.33, 4.34, 4.35, 4.36, 4.37, 4.38, 4.39, 4.40, 4.41, 4.42, 4.43, 4.44, 4.45, 4.46, 4.47, 4.48, 4.49, 4.50, 4.51, 4.52, 4.53, 4.54, 4.55, 4.56, 4.57, 4.58, 4.59, 4.60, 4.61, 4.62, 4.63, 4.64, 4.65, 4.66, 4.67, 4.68, 4.69, 4.70, 4.71, 4.72, 4.73, 4.74, 4.75, 4.76, 4.77, 4.78, 4.79, 4.80, 4.81, 4.82, 4.83, 4.84, 4.85, 4.86, 4.87, 4.88, 4.89, 4.90, 4.91, 4.92, 4.93, 4.94, 4.95, 4.96, 4.97, 4.98, 4.99, 5.00, 5.01, 5.02, 5.03, 5.04, 5.05, 5.06, 5.07, 5.08, 5.09, 5.10, 5.11, 5.12, 5.13, 5.14, 5.15, 5.16, 5.17, 5.18, 5.19, 5.20, 5.21, 5.22, 5.23, 5.24, 5.25, 5.26, 5.27, 5.28, 5.29, 5.30, 5.31, 5.32, 5.33, 5.34, 5.35, 5.36, 5.37, 5.38, 5.39, 5.40, 5.41, 5.42, 5.43, 5.44, 5.45, 5.46, 5.47, 5.48, 5.49, 5.50, 5.51, 5.52, 5.53, 5.54, 5.55, 5.56, 5.57, 5.58, 5.59, 5.60, 5.61, 5.62, 5.63, 5.64, 5.65, 5.66, 5.67, 5.68, 5.69, 5.70, 5.71, 5.72, 5.73, 5.74, 5.75, 5.76, 5.77, 5.78, 5.79, 5.80, 5.81, 5.82, 5.83, 5.84, 5.85, 5.86, 5.87, 5.88, 5.89, 5.90, 5.91, 5.92, 5.93, 5.94, 5.95, 5.96, 5.97, 5.98, 5.99, 6.00, 6.01, 6.02, 6.03, 6.04, 6.05, 6.06, 6.07, 6.08, 6.09, 6.10, 6.11, 6.12, 6.13, 6.14, 6.15, 6.16, 6.17, 6.18, 6.19, 6.20, 6.21, 6.22, 6.23, 6.24, 6.25, 6.26, 6.27, 6.28, 6.29, 6.30, 6.31, 6.32, 6.33, 6.34, 6.35, 6.36, 6.37, 6.38, 6.39, 6.40, 6.41, 6.42, 6.43, 6.44, 6.45, 6.46, 6.47, 6.48, 6.49, 6.50, 6.51, 6.52, 6.53, 6.54, 6.55, 6.56, 6.57, 6.58, 6.59, 6.60, 6.61, 6.62, 6.63, 6.64, 6.65, 6.66, 6.67, 6.68, 6.69, 6.70, 6.71, 6.72, 6.73, 6.74, 6.75, 6.76, 6.77, 6.78, 6.79, 6.80, 6.81, 6.82, 6.83, 6.84, 6.85, 6.86, 6.87, 6.88, 6.89, 6.90, 6.91, 6.92, 6.93, 6.94, 6.95, 6.96, 6.97, 6.98, 6.99, 7.00, 7.01, 7.02, 7.03, 7.04, 7.05, 7.06, 7.07, 7.08, 7.09, 7.10, 7.11, 7.12, 7.13, 7.14, 7.15, 7.16, 7.17, 7.18, 7.19, 7.20, 7.21, 7.22, 7.23, 7.24, 7.25, 7.26, 7.27, 7.28, 7.29, 7.30, 7.31, 7.32, 7.33, 7.34, 7.35, 7.36, 7.37, 7.38, 7.39, 7.40, 7.41, 7.42, 7.43, 7.44, 7.45, 7.46, 7.47, 7.48, 7.49, 7.50, 7.51, 7.52, 7.53, 7.54, 7.55, 7.56, 7.57, 7.58, 7.59, 7.60, 7.61, 7.62, 7.63, 7.6

Hubenak Elementary



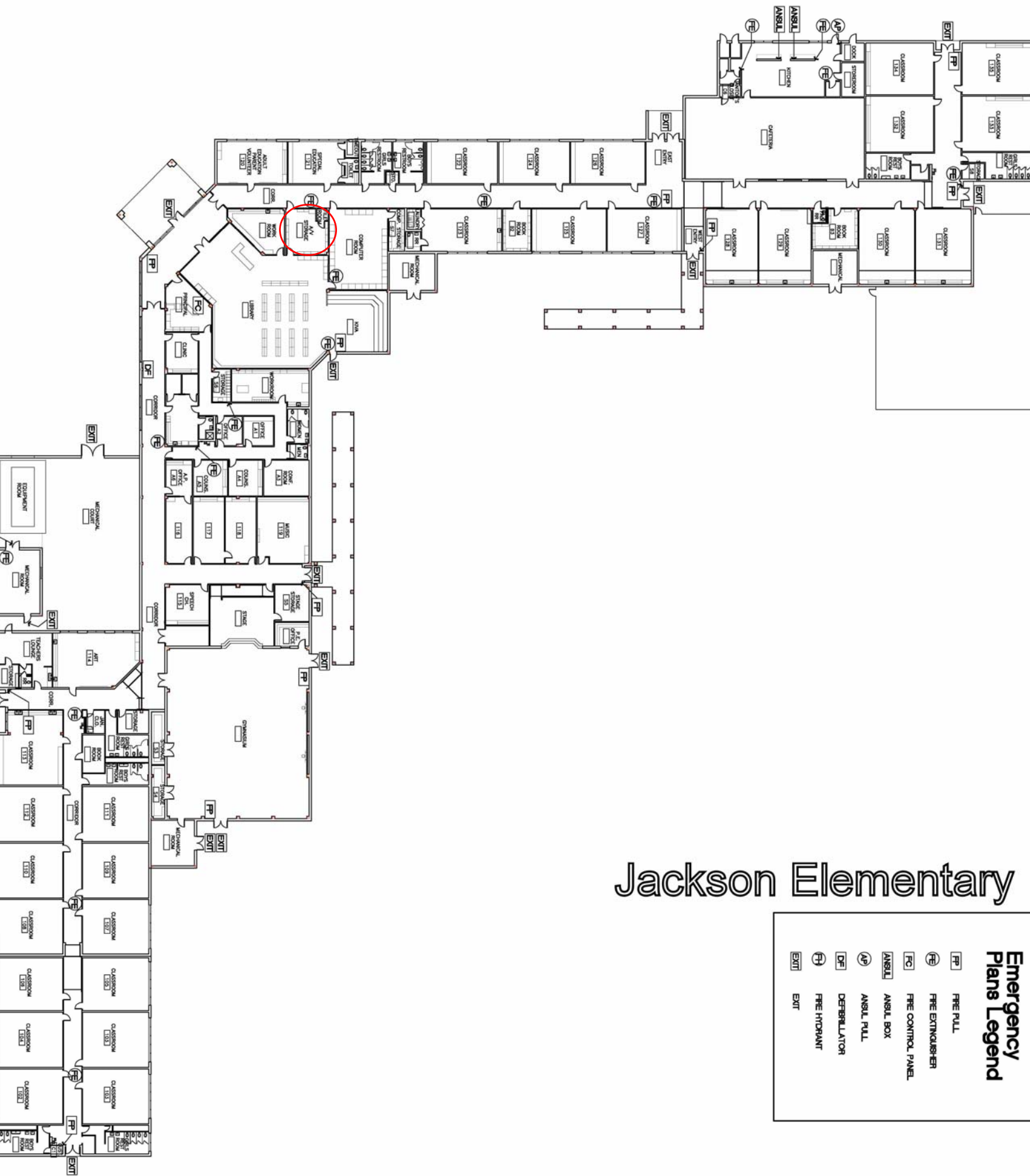
Huggins Elementary



This is a detailed architectural floor plan of a school building. The plan shows a complex layout of rooms and corridors. Key areas include:

- Classrooms:** Numerous classrooms are labeled throughout the plan, often with numbers like 1.1, 1.2, 1.3, etc.
- Corridors:** A network of corridors connects the various rooms.
- Library:** A large library area is located in the central part of the building.
- Gymnasium:** A large open space, likely for physical education, is situated on the right side.
- Cafeteria:** A large room for dining is located near the gymnasium.
- Kitchen:** A kitchen area is adjacent to the cafeteria.
- Other Rooms:** The plan also includes a large group room, a resource room, a computer lab, and various smaller rooms like restrooms and storage.

A red circle highlights a specific area in the central part of the building, near the library and a large group room. This area appears to be a small room or a section of a corridor.



Jackson Elementary

Emergency Plans Legend

FP

FIRE PULL

FE

FIRE EXTINGUISHER

FC

FIRE CONTROL PANEL

ANSBL

ANSBL BOX

AP

ANSBL PULL

DF

DEFIBILLATOR

FD

FIRE HYDRANT

EXIT

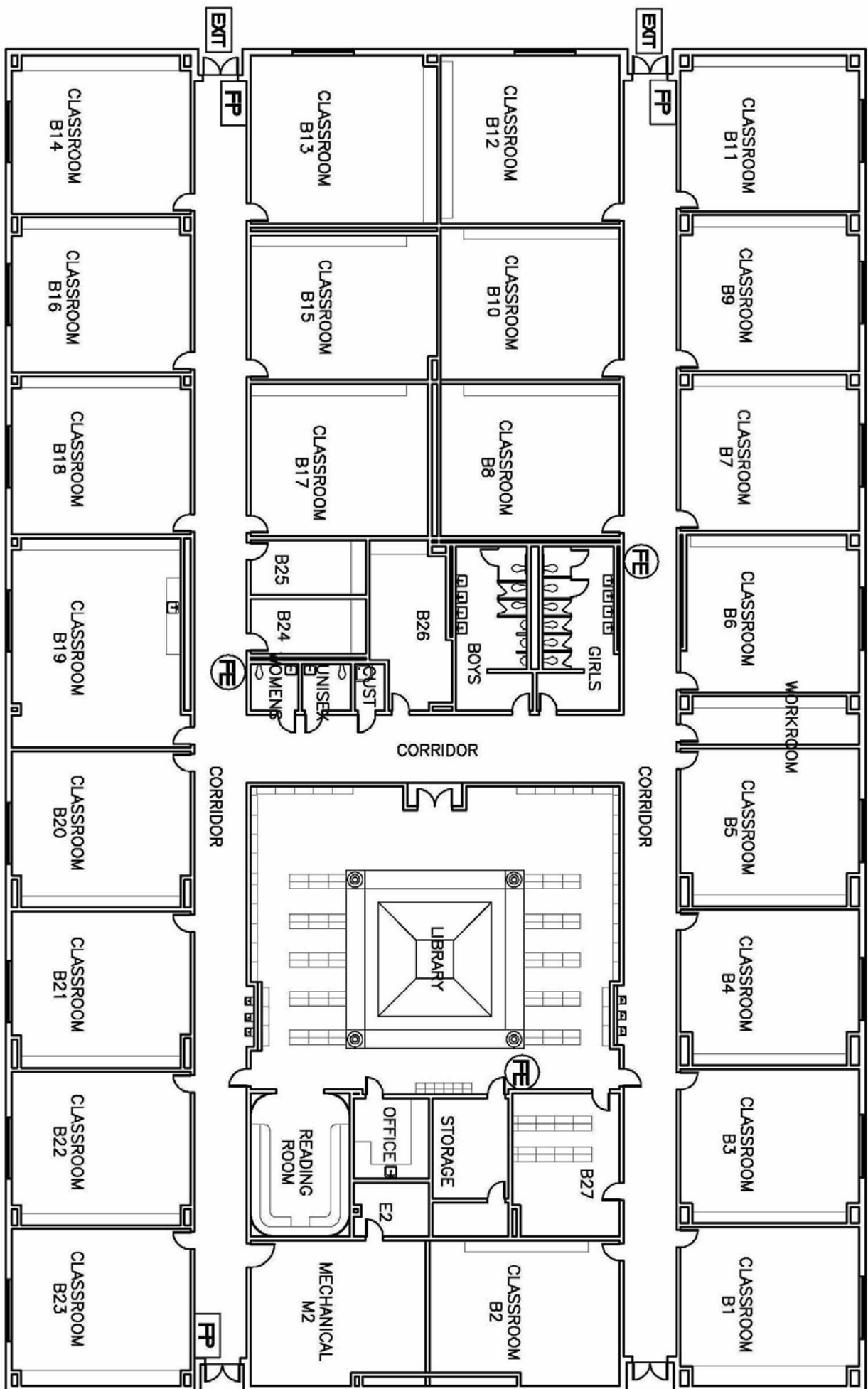
EXIT

The floor plan shows a school building with the following layout:

- Top Section:** CLASSROOM A6, PRIN. CONF., ADMIN, A.P., ADMIN WORK, DATA, STP, CLIN, CLASSROOM A5, CLASSROOM A4.
- Left Section:** CLASSROOM A7, MECH. M1, AUDITORIUM, BOYS, TEACHER WORKSHOP, CORRIDOR, CLASSROOM A3, CLASSROOM A2, CLASSROOM A1.
- Bottom Section:** CLASSROOM A11, CLASSROOM A12, CLASSROOM A13, STORAGE, PLATFORM, STP.
- Central Area:** A large open area with a grid pattern, likely a courtyard or a large storage area.
- Exits:** Multiple exits are marked throughout the building, including a central exit near the data center and storage room.

The floor plan illustrates the layout of the first floor, featuring a central corridor system. On the right side, there are five kindergarten classrooms (J100-J105) and a larger classroom (J108). The top left contains two pre-K classrooms (J110, J111) and a classroom (J113). The bottom left includes a classroom (J114), music room (J115), art room (J116), and a kitchen area. The center of the floor is occupied by a large gymnasium (J125) and a cafeteria (J104). The bottom right section contains a staff dining area, mechanical room, kitchen, and restrooms for girls and boys. Various other rooms like a P.E. office, stage, and storage areas are also depicted. Exit doors are clearly marked at multiple locations around the perimeter and within the corridors.

	FIRE PULL
	FIRE EXTINGUISHER
	FIRE CONTROL PANEL
	ANSUL BOX
	ANSUL PULL
	DEFIBRILLATOR
	FIRE HYDRANT
	EXIT



Jane Long - "C" Floor 2